

# 10. International Autism-Europe Congress

## *New Dimensions for Autism*

**Budapest**  
**26-28 September 2013**



**PROGRAMME BOOK**



## **Improving quality of life for people with Autism and their families**

[www.autismeurope.org](http://www.autismeurope.org)

Autism-Europe represents an estimated 5 million people with Autism and their families throughout Europe. Our aim is to help these people to improve their quality of life by standing up for their rights.

Our association is comprised of more than 80 member associations in 30 European countries.

Autism-Europe is recognised by the European institutions (including the European Union and the Council of Europe) as the voice of people with Autism and their families throughout Europe.

We work with our members to stand up for their rights by:

- Advocating for the rights of people with Autism before the European institutions;
- Monitoring European laws and policies;
- Promoting appropriate treatment, care and education for people who have Autism;
- Promoting the exchange of information, good practices and experience in the field of Autism;
- Promoting awareness of Autism.

The association is frequently consulted by the European institutions and the World Health Organisation on matters relating to Autism.

To maximise our impact on EU policies, we also work in strategic coalitions with other organisations who share the same concerns and goals, including the European Disability Forum, the European Coalition for Community Living and the European Social Platform.

Working with several organisations for people with Autism and their families requires coordination. We regularly bring our members together to consult and discuss important issues and policies that affect people with Autism. Autism-Europe represents their views towards policy-makers at a European level.

Autism-Europe is an independent, not-profit organisation. Our work is supported by a grant from the European Commission through the PROGRESS Programme. The information contained in this leaflet does not reflect the position or opinion of the European Union.

Join us and with your help, Autism-Europe can achieve more for people with Autism and their families.

Rue Montoyer 39 bte 11

B-1000 Brussels

Belgium

Tel.: +32 (0) 2.675.75.05

Fax: +32 (0) 2.675.72.70

Email: [secretariat@autismeurope.org](mailto:secretariat@autismeurope.org)

[www.autismeurope.org](http://www.autismeurope.org)

## NEW DIMENSION FOR AUTISM

### President's Greeting



Autism-Europe advocates for the full and equal protection of human rights and fundamental freedom for people with autism and their families on European level. The principles of inclusion and partnership are at the core of our work, and we follow these throughout our congresses.

Autism-Europe's congresses aim to share practical and scientific knowledge and development about autism among the widest possible audience, including practitioners, researchers, parents and self-advocates. Bringing these diverse stakeholders together enables us all to learn from each other.

The field of autism encompasses many types of disciplines, from medical research on diagnosis, through interventions and treatments, to best practices in education, employment and provided services and so forth. Autism is a subject that has attracted much research and attention around the world, yet many of the most important questions in this field remain to be answered. There are still many families in Europe who do not have access to services at all. Autism-Europe and our congresses are dedicated to promote high quality research and evidence-based approaches.

The 10th Autism-Europe International Congress focuses on the most recent developments in the field of autism. The program will include sessions on topics that have generated much interest recently, such as new developments in information and communications technologies, best practices in providing services and ensuring quality of life for people with autism as they become elderly.

Autism-Europe's congresses are traditionally held every three years. This one will be an historic occasion, marking both the 10th Autism-Europe International Congress, and the 30th anniversary of Autism-Europe.

Furthermore, this is the first time that an Eastern European country has gained the opportunity to organise a congress under the aegis of Autism-Europe. The strengths and creativity of Eastern European organisations in the treatment and support of people with autism will hence be showcased.

With kindest regards,

Zsuzsanna Szilvasy  
*President*  
*Autism Europe*

# 10<sup>th</sup> International Autism-Europe Congress

September 26-28, 2013 – Budapest

## Organizers:

### SCIENTIFIC INFORMATION

#### Scientific Programme Committee

Dr. Anna Balázs                      Honorary Chair  
Zsuzsanna Szilvássy                Chair

Dr. Fred R. Volkmar  
Dr. Joaquin Fuentes  
Dr. Krisztina Stefanik  
Dr. Michel Favre  
Dr. Miklós Gyóri  
Prof. Tony Charman  
Virág Katalin Bognár, PhD

#### Honorary Scientific Programme Committee

Alison Singer	Dr. Katarzyna Chawarska
Prof. Dr. Ágnes Vetró	Krisztina Németh
Prof. Francesca G. Happé	Prof. Nancy Minshew
Giacomo Vivanti	Prof. Patricia Howlin
Prof. György Gergely	Prof. Rita Jordan
Ildikó Kanizsai-Nagy	Prof. Dr. Rutger Jan van der Gaag
Prof. Dr. István Bitter	Prof. Sven Bölte
Dr. Joseph Mintz	Theo Peeters

#### Patrons of the Conference

Dr. János Áder	President of the Republic of Hungary
Zoltán Balog	Minister of Human Resources
Miklós Soltész	Minister of State for Social, Family and Youth Affairs
Attila Fülöp	Deputy State Secretary for Family and Equal Opportunities



## Congress Organizing Committee

Zsuzsanna Szilvásy Chair

Donata Vivanti  
Krisztina Horvát  
Orsolya Hajdú

Dr. Réka Vályi  
Zsuzsanna Czunyi

## CONGRESS SECRETARIAT

### TENSI Ltd.

H-1023 Budapest /Hungary  
Komjádi Béla u. 1.

### Edit KASSAI

Phone: +361 345 1557

Fax: +361 345 1544

E-mail: [ekassai@tensi.hu](mailto:ekassai@tensi.hu)  
[autismcongress2013@tensi.hu](mailto:autismcongress2013@tensi.hu)



## Main Sponsor



EMBERI ERŐFORRÁSOK  
MINISZTERIUMA

### Ministry of Human Resources

– organizer of the Day 0 for Hungarians as well

## Main Media Sponsor



HetiVálasz

hvg.hu

FEMINA.hu

## Media Sponsors

## Sponsors



rentIT  
[www.rentit.hu](http://www.rentit.hu)



STAR ALLIANCE



fruit of care®  
a gondoskodás gyümölcse

## General information

### Website

[www.autismcongress2013.eu](http://www.autismcongress2013.eu)

### Location

#### Budapest

The metropolis with a population of two million is bisected by the mighty flow of the Danube with hills and valley on the Buda side and the flat, low-lying Pest on the other.



Often described as the "Little Paris of Middle Europe", Budapest is famous not only for the monuments reflecting its own 1,000-year-old culture, but also for the relics of others who settled here. In the city, there is an unmistakable feeling that something out of the ordinary is just around the corner, but what it will be is up to you to find out.

#### Time Zone

Budapest is in the Central European Time Zone. In the winter months this means clocks are set at GMT + 1 hour, and in the summer (March to the end of October) GMT + 2 hours.

#### Electricity

Voltage in Hungary is 220 volts, and plugs are of the two-pin continental type.

#### Telephone

The international code for Hungary is 36; the area code for Budapest is 1.

#### Currencies

The Hungarian currency is the forint. All visitors are advised to exchange currency only at accredited places. The majority of banks have 24-hour ATM's some of which can also exchange foreign.

### Conference Venue

The Budapest Congress Center (H-1123 Budapest, Alkotás u. 63-67., Main Entrance: H-1123 Budapest, Jagello u. 1-3.) is the number one conference centre in Hungary. Situated in a picturesque chestnut park, the hotel can be found on the Buda side of the capital, close to the Southern Railway Station, the M1/M1 Motorways, and MOM Shopping Center.



The conference and the exhibition will be organized in the Center's conference rooms, and in the Larus event building located in 10 minutes walking distance from the Congress Centre.

### **How to get there?**

The Budapest Congress Center is easily accessible with any kind of transportation.

From the airport, the simplest way is to have the services of the Budapest Airport Minibus or to take a taxi.

Participants, travelling by train, we suggest to arrive to the Southern Railway Station and the Conference Center is in 10 minutes from there by public transportation.

Participants, coming by public transportation, can take Tram 61 from either Széll Kálmán Square or Móricz Zsigmond Square.

The parking lot of the Congress Center can be reached from Jagello Street.

### **Parking**

The Novotel Budapest Congress Hotel offers spaces for its guests in its parking lot on discounted prices. The price is 4000,- Ft / car / day.

The entrance of the Congress Center's parking place is from Jagello Street.

### **Opening hours of the registration during the conference**

September 26, Thursday: 08.00 - 18.00

September 27, Friday: 08.00 - 18.00

September 28, Saturday: 08.00 - 12.00

### **Languages of the Conference**

The official language is English.

Simultaneous Interpretation: English, Hungarian, French, Spanish is provided in the plenary room

Simultaneous Interpretation: English, Hungarian, is provided in the section rooms

### **Cloakroom**

Please note that it is **mandatory** to use the cloakroom in both the Budapest Congress Center and the Larus Event Center. *(The hostesses will not allow you to enter the lecture halls.)*

Price of the cloakroom in Budapest Congress Center: **300 Ft (€ 1)**

Price of the cloakroom in Larus Event Center: free

## CME

Please be informed that the congress is CME accredited for social workers, psychiatrists, neurologists and psychologists.

Credit points:

- Social workers: 10 points
- Psychiatrists, neurologists and psychologists: 11 points

## Registration fees

Registration fees		AE Members	Non AE members
Professionals	Very early bird	310 Euro	360 Euro
	Early bird	355 Euro	400 Euro
	Regular	385 Euro	460 Euro
	Late	395 Euro	470 Euro
Parents, Students, PWA	Very early bird	110 Euro	160 Euro
	Early bird	120 Euro	190 Euro
	Regular	130 Euro	210 Euro
	Late	140 Euro	220 Euro

(The registration fees include the VAT.)

The registration fees includes the participation at the conference and the exhibition, 3 coffee breaks, 2 buffet lunch, the conference bag, the badge and conference materials.

## Badge information

**White** – every participant paying full registration

**Yellow** – free exhibitor badge

(not allowed to enter the lecture rooms, and not have conference bag, and pen drive)

**Purple with a white strip** – Scientific organizers

**Green** – Press

**Purple** – conference organizers

Please remember to wear your badge every day as you can only enter the conference venue and the lecture rooms this way. ***We cannot replace lost badges!***

## **Cancellation and refund**

### **I. Substitution:**

In case you are unable to attend the conference, you are welcome to nominate someone else on your behalf at no additional cost. (Please note that the data of the invoice cannot be changed.)

### **II. Refunds:**

#### **Congress registration fees: no refund.**

**Accommodation:** Cancellation received after August 23, 2013 is not eligible for a refund.

**Social dinner:** Cancellation received after August 26, 2013 is not eligible for a refund.

## **Accommodation**

Novotel Budapest City Hotel  
Hotel Bara  
Hotel Bara / Junior  
Best Western Hotel Hungaria  
Hotel Mediterran  
Mercure Budapest Buda

Danubius Hotel Budapest  
Danubius Hotel Flamenco  
Hotel Classic  
Villa Hotel Kristal  
Hotel Walzer  
Jagello Business Hotel

## **Catering**

Breakfast is included in the room price.

During the conference, two daily coffee breaks and buffet lunch are provided for the participants.

## **Internet**

Free Wi-Fi (with username and password) and wired Internet (wires without computer) will be provided in the "Internet corner" of the Conference venue (AULA).

## **"Message in a bottle"**

Have you seen the famous movie and wished your "*Message in a bottle*" would be found by someone?

Close to the Plenary Hall, volunteers will wait for you with iPads and you can send your message about what you want to change in the field of autism; what you wish for your autistic family member; what would be the biggest support in your work, or more importantly, how would you change the world to be a better place for all persons living with autism.

Come and send your "*Message in a bottle*" or enjoy what others told us!

## Quiet room

In case you would like to escape the buzz of the conference and have some quiet moments, you can find a **“Quiet room”** on the Entrance level of the Conference venue (the door is from the left of the cloakroom).

## Slide Check Room

**All speakers** – *not having submitted their abstract beforehand* – must deliver their PowerPoint presentation (UBS key /CDRom /DVD) to the assigned technician in the Slide Check Room 1.5 hours before their presentation and also confirm their audiovisual requirements.

The Slide Check Room is located close to the registration desk, on the first floor of the Congress Centre in Kodály Room and will be open at the following times:

September 26, Thursday: 08.00 - 18.00  
September 27, Friday: 08.00 - 18.00  
September 28, Saturday: 08.00 - 12.00

## Poster Section

The location of the Poster Section is on the **second floor, Gallery Corridor** of the Congress Center. The poster boards are numbered which correspond to your assigned display station. (*Your poster number is listed in the Congress Program.*)

*Oral + poster presentation* are numbered **from 13.1 to 22.8**, and can be placed from **8.00 am** Thursday, **September 26**. These must be **removed by 02.00 pm** on Saturday, **September 28**.

*Normal Posters*, numbered **from 1.1 to 7.10**, can be displayed from **8.00 am**, Thursday, **September 26**. These must be **removed by 11.00 am** on Friday, **September 27**.

*Normal Posters*, numbered **from 8.1 to 12.17**, can be displayed from **11.00 am**, Friday, **September 27**. These must be **removed by 02.00 pm** on Saturday, **September 28**.

*Please note that if you do not remove your poster until the given time, it will be destroyed.*

## Size of the poster boards:

90 cm x 120 cm (vertical format)

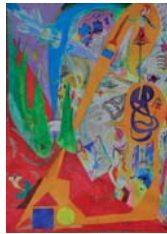
The poster boards are covered in textile, therefore the presentations can only be fixed with pins/drawing pins. Please ask for pins at the registration desk.

## Art Exhibition

### VI INTERNATIONAL ART EXHIBITION OF PEOPLE WITH AUTISM



Budapest, 26th-28th September 2013



### Autism Burgos

Since 1997, Burgos Autism Association has been organizing several international exhibitions for people with autism in order to encourage creativity and artistic expression among people with autism.

Since 2000, when the works were shown at the Museum of Modern Art in Glasgow, every international edition has been seen at the venue of the International Congress Autism Europe (Glasgow, Lisbon, Oslo and Catania) every three years.

Designed as a traveling exhibition, the former editions have been seen in places in Europe where the works of people with ASD have very difficult access (art galleries, European Parliament or regional Parliament of Castilla y Leon)..

The initiative aims to provide a positive image of people with ASD, promote employment and social integration of people with ASD, to raise awareness on the artistic possibilities of people with ASD, research on creativity and development opportunities in the people with ASD and show the possibilities of art as occupation and leisure.

This year we get 221 participants and the public may vote and see the works on the internet.





The Hungarian **Mosoly Otthon** (Home of Smiles) **Foundation** has been supporting the improvement of living conditions of people living with autism since 2006. The Foundation has implemented a visual development program called Autistic Art in the residential homes, where these young people live and work under the guidance of figurative artists.

As important milestones of the long-term art program, the works of **autistic artists** were sold at auctions with great success. (Műcsarnok, in 2010, 2011, 2012, Hungarian National Gallery, in 2011, Miskolc Gallery, in 2010). During these auctions more than 80 million forints were collected for the 11 participating homes run by non-profit private organisations.

The best art works of this year, selected by the leader of the program, Hajnalka Tarr, will be exhibited at the location of the 10th Congress on Autism at the **Autistic Art exhibition along with works by contemporary figurative artists** - focusing on the similarities.

**On the first day of the Congress the art works will be offered for charity auction followed by an exclusive reception.**





## Exclusive Charity Auction with Dinner

Date: 26 September, 2013, 8 pm.

Venue: Budapest Congress Center

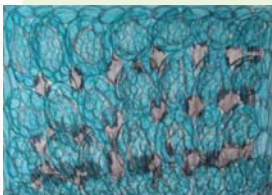
The program of the evening:

- Guided tour of the exhibition by Hajnalka Tarr artist and contemporary art expert
- Exclusive dinner
- Performance of a talented young pianist, Balázs Kálvin (living with autism)
- Performance of Júlia Kaposi, jazz singer
- Charity auction led by Judit Virág

Entrance fee: **95 €**

All income of our 5th Charity Auction will support the residential homes improving the living conditions of these young artists.

To read more on the Foundation visit: [www.autisticart.eu](http://www.autisticart.eu)



## Social Program

### „Puszta” program at the New Tanyacsárda in Lajosmizse

**Date:** September 27, 2013

**Program time:** 19.00

**Transfer time:** 18.00

*The buses will leave from the parking lot of the hotel.*



The program price includes:

- Bus transfer to the venue
- Guide during the transfer
- Welcome reception with homemade hot crackling scones and Hungarian spirit
- Carriage riding
- Open kitchen
- Stud-riding
- Horse show, visiting the stables
- Dinner with drinks and open kitchen

**Dress Code:** Casual – comfortable leisure cloths with light overcoat

**Program price:** 50 € / person

*We would like to draw your attention to the fact that the gala dinner at the Tanyacsárda involves a lot of sensory stimuli (noise, dust, crowd and smell) that may disturb persons with autism. Naturally, they are warmly welcome yet we suggest that everybody should consider the above mentioned information before registration.*

## Keynote Speakers

### Dr. Anna Balázs



Dr. Anna Balázs is the founder of Autism Foundation and she has been the head of it since it was established. Its main activities: operating the autism ambulance, primary school, daycare centre and a publisher; clinical, psychological and educational research; testing; developing methodology; training for professionals; supporting families, professionals and other service providers. Dr. Balázs initiated the establishment of the parent association (that is now known as Hungarian Autistic Society) and she – with other autism expert - has developed the Hungarian ASD guideline.

### Ros Blackburn



Ros Blackburn is an adult with classic autism. At three months old she appeared withdrawn, isolated and very much in a world of her own. At eighteen months she was diagnosed very severely autistic but with average intellectual ability. Now at 44 Ros lectures nationally and internationally giving insight into her own experiences and the care and education practices she has observed. In spite of the severe limitations imposed by her condition, Ros displays great courage (and a strong sense of humour) in facing her fears and tackling life's challenges.

### Virág Katalin Bognár, PhD



Ms. Bognár is a sociologist, statistical analyst in social statistics, investigations of children and young people with intellectual disability and/or ASD, external lecturer in medical sociology at the Semmelweis University of Medicine, Institute of Behavioural Sciences, Hungary.

### Prof. Sven Bölte



Professor Bölte is the Director of the Center of Neurodevelopmental Disorders at Karolinska Institutet. His research has focused on the epidemiology, causes, assessment and treatment of autism spectrum disorders. He also has many years of experience as a clinical psychologist and has published extensively in the field of autism.

## Prof. Tony Charman



Professor Charman holds the Chair in Autism Education at the Institute of Education, London, and practices as a chartered clinical psychologist, working with children who have autism.

He has published more than 150 peer-reviewed papers and more than 25 book chapters. He has served on a number of expert panels related to autism for the United Kingdom and the United States governments, and he works closely with autism organisations in the UK to advocate for the rights of people who have autism.

## Dr. Katarzyna Chawarska



Katarzyna Charwarska is Associate Professor in the Child Study Center, and Director of the Toddler Developmental Disabilities Clinic, at Yale University. Her research focuses on the early phenotypic expression of autism and gaze and face processing abnormalities observed in infants and toddlers with autism.

## Michel Favre



Michel Favre is parent of a 26-years-old boy with autism. He is the head of a research unit and co director of the French National Reference Laboratory for human papillomavirus in Institut Pasteur, Paris.

Since 2006, he is president of Pro Aid Autism, a parents' association involved in the training of families and professionals to the TEACCH program. He is also vice president of the ARIA association that manages institutions for adults with autism. Finally he was vice president of Autism Europe from 2008 to 2011 and remains a member of scientific committee of the association.

The Congress Organizing Committee is extremely grateful for his work in the Scientific Organizing Committee.

## Evelyne Friedel



Evelyne Friedel is Doctor in law and attorney, member of the Paris Bar. She is the mother of an 18 years old autistic boy and defends, with Autism Europe and other French organisations, the fundamental rights of autistic people before the national & European authorities. After her presidency of Autism-Europe she became vice-president of the international organisation. Since 2004, Evelyne Friedel has continued acting both at the European and at the national level in favour of the fundamental rights, and in particular in favour of the fundamental right for education of people with autism and of people with complex dependency needs.

### **Dr. Joaquin Fuentes**



Joaquin Fuentes is Chief of Child & Adolescent Psychiatry in Policlínica Gipuzkoa and Research Consultant of Gautena Autism Society, in Donostia / San Sebastian, Spain. He has been instrumental in the development of community services for ASD in the Basque Country, and serves as one of the Vice Presidents of IACAPAP (International Association for Child and Adolescent Psychiatry and Allied Professions).

### **Prof. György Gergely**



Professor Gergely is Co-Director of the Cognitive Development Center at the Central European University. His research, for which he has been awarded numerous prizes, includes extensive work on social cognitive development in children.

### **Dr. Miklós Györi**



Miklos Gyori is a cognitive psychologist, and is recently at the Institute for the Psychology of Special Needs at ELTE University, as an associate professor and head of institute, and also lectures at the University of Vienna. His major fields of interest are cognition and communication on the autism spectrum and in other cases of atypical cognition; applying eye-tracking technique in research as well as in assistive and diagnostic technologies; and evidence-based assistive info-communication technologies for people with autism.

### **Prof. Francesca G. Happé**



Francesca Happé is Professor of Cognitive Neuroscience and Director of the MRC Social, Genetic and Developmental Psychiatry Centre at the Institute of Psychiatry, Kings College London. Her work has explored the nature of social understanding in typical development and 'mind-reading' difficulties in autism, abilities and assets of people with autism, and their relation to detail-focused cognitive style. From 2013 she will be the President of the International Society for Autism Research.



## **Prof. Patricia Howlin**



Patricia Howlin is Emeritus Professor of Clinical Child Psychology, King's College, London and Professor of Developmental Disorders, University of Sydney. A particular focus of her research is on the effectiveness of interventions for individuals with autism and she has been involved in evaluations of a variety of therapies, including early intervention programmes, non-verbal communication training, teaching theory of mind, and supported employment. She has also conducted a number of follow-up studies investigating outcomes in adult life for people with autism and other developmental disorders.

She received the Autism Association of Western Australia award for services to autism (2011) and the International Society for Autism Research (INSAR) Life Time Achievement award (2013).

## **Prof. Rita Jordan**



Rita Jordan is Emeritus Professor in Autism Studies at the University of Birmingham. She has established and run a range of professional development programmes in autism studies, and published research on many aspects of autism. She has served on national and international autism committees as well as being a consultant to the Expert Committee on Autism for the Council of Europe. She is also the former Deputy Principal of a school for children with autism.

## **Prof. Nancy Minshew**



Professor Minshew is a child neurologist and Director of the Center for Excellence in Autism Research at the University of Pittsburgh. Her research has made many contributions to the delineation of cognitive and brain mechanisms responsible for the behavioural manifestations of autism. Professor Minshew has also worked with many government and parent organisations to translate research advances into policy and services.

## **Theo Peeters**



Theo Peeters founded the Opleidingscentrum Autisme (Centre for Training in Autism) in Antwerp and provided some of the first training courses on autism in Belgium. He is TEACCH-affiliated and has published many books on autism, with his main focus being on ethical issues in autism, such as the understanding of autism from within and parent-professional collaboration.



## Dr. Sally J. Rogers



Dr. Rogers studies early social, cognitive, and emotional development, development of motor skills, communication, imitation, and language in children with severe disabilities, development of social relationships in people with disabilities, and treatment efficacy in autism at the UC Davis MIND Institute.

Her clinical interests include early diagnosis and intervention for children with autism spectrum disorders, and evaluation of cognitive, behavioural, social, emotional, and adaptive functioning in children with other developmental disorders.

## Dr. Andy Shih



Andy works closely with Autism Speaks to develop and implement the organization's research program. He oversees the etiology portfolio, which includes genetics, environmental sciences and epidemiology, as well as the Innovative Technology for Autism program. Andy also leads Autism Speaks' international scientific development efforts, an international advocacy effort currently active in over 40 countries around the world that integrates awareness, research, and service development. His research background includes published studies in gene identification and characterization, virus-cell interaction, and cell-cycle regulation. He was instrumental in the cloning of a family of small GTPases involved in cell-cycle control and nuclear transport, and holds three patents on nucleic acids-based diagnostics and therapeutics.

## Krisztina Stefanik, Ph.D.



Krisztina Stefanik is an Autism-expert, and psychologist. Recently she is the vice-dean for scientific and international affairs at the Eötvös Loránd University Bárczi Gusztáv Faculty of Special Education, Budapest, Hungary. She is also the leader of the new 'Education for Autism Spectrum' specialisation of the Faculty, which is unique in Europe. Her main research interests are the evidence-based screening, diagnostics and treatment of ASD; the cognitive psychological background of ASD and its influence on practical work; prospective investigations for prognostic factors and on the efficiency of treatment methods. Recently she has been involved in projects for developing assistive digital technologies for people with ASD.

## Dr. Donata Vivanti



Mother of twins with autism, she works full time to advocate for the rights of persons with autism and other disabilities with intense support needs within regional, national and European NGOs.

She was the president of Autism-Europe from 2000 to 2007; she has been Vice-president of the European Disability Forum since 2005. Her main fields of interest are equal opportunities for people with disabilities in need of more intense support in the field of inclusive education, habilitation, health-care, employment, as well as the de-institutionalization processes.

## Dr. Fred R. Volkmar



Dr. Volkmar is the Irving B. Harris Professor of Child Psychiatry, Paediatrics, and Psychology and Director of the Yale University Child Study Center in the United States. He is also the Chief of Child Psychiatry at Yale-New Haven Hospital. Dr Volkmar was the primary author of the American Psychiatric Association's DSM-IV section on autism and pervasive developmental disorders, as well as being the author of hundreds of scientific papers and chapters, and several books, on the topic of autism.

The Congress Organizing Committee is extremely grateful for his work in the Scientific Organizing Committee.

## Workshop speakers

### Autism Foundation – Tamásné (Patricia) Ószi



Tamásné Ószi is a special needs teacher and an Autism-expert. Currently she is the head teacher of the School of Autism Foundation and assistant lecturer at the Eötvös Loránd University Bárczi Gusztáv Faculty of Special Education, Budapest, Hungary. Her main interest is the evidence-based treatment of ASD. She participated in important developments in the field of ASD, such as the Guidelines for Autism/Autism Spectrum Disorders of Ministry of Education.

### Autism Foundation – Ágnes Havasi



Ágnes Havasi is an Autism-expert and an assistant lecturer at ELTE Bárczi Gusztáv Faculty of Special Education at the new 'Education for Autism Spectrum' specialisation, and teacher at the Primary School of the Autism Foundation in Hungary, Budapest.

Her main research interests are evidence-based treatment of ASD; the communication problems and their treatment in ASD; and the use of Augmentative and Alternative Communication (AAC) tools and teaching methods in the therapy of ASD.

### Autism Foundation – Monika Janoch



Monika Janoch is an Autism-expert and a special needs teacher. Since 1995 she's working at Autism Foundation, and currently she is also a lecturer at the Eötvös Loránd University Bárczi Gusztáv Faculty of Special Education, Budapest, Hungary. Her main interests are the evidence-based diagnostics and treatment of challenging behaviours. She was one of the experts of the projects for the Hungarian adaptation of ADOS and their introduction into clinical practice.

## János Farkas



Janos Farkas has spent the last 20 years creating skill development systems. As HR director of a large textile plant with 2500 employees he was responsible for teaching workers new soft-skills, resulting in higher efficiency-level in production. After establishing Training Media Kft., he has been working in the field of skill-development systems for education, business and self-improvement. The latest product of the company is 'ASD KVIZ', a multimedia-based deficit-specific skill development system for people living with ASD. Mr. Farkas is father of Adam (23) who is living with Asperger syndrome.

## Caroline Hattersley



Caroline is Head of Information, Advice and Advocacy, and oversees a range of services including the Autism Helpline, advocacy and rights services, befriending and mentoring services, the library and Information Centre. She is also responsible for a range of innovative projects, including Family Rights, Early Support, Transforming Lives, etc. She is a senior spokesperson for the organisation and undertakes media and other speaking opportunities regularly. She is a passionate advocate on disability rights as a direct result of her experience of becoming disabled at the age of 21, and is an avid promoter of gender equality and ethics in the workplace.

## Sheila Merzer



Sheila Merzer, M.A., L.P. is a licensed psychologist with over 40 years of experience working with children with Autism Spectrum Disorders and their families and schools. She co-directed a day treatment program for children with Autism for 12 years before opening her private practice in 1990.

## Dr. Mark Palmieri



Dr. Mark Palmieri is a clinical psychologist and board certified behaviour analyst. He is Co-Director of the Feeding and Sleep Disorders Clinics as well as Director of School-based Consultation Services at the Center for Children with Special Needs. He has consulted with programs in Italy for several years, including the feeding disorders program at the Agazzi Institute in Arezzo, Italy.

The Congress Organizing Committee is extremely grateful to him for holding a workshop on Day 0. for Hungarians who were not be able to participate at the Congress.

## Michael Powers



Dr. Michael Powers is a paediatric psychologist and the Director of the Center for Children with Special Needs and a member of the clinical faculty of the Autism Program at the Yale Child Study Center. For nearly 35 years Dr. Powers has been involved in the assessment and treatment of individuals with ASD, and in the treatment of severe behaviour problems, throughout the United States and Europe.

The Congress Organizing Committee is extremely grateful to him for holding a workshop on Day 0, for Hungarians who were not be able to participate at the Congress.

## Csilla Prekop



Csilla Prekop has been special teacher in ASD for 25 years. She provides services to families and professionals dealing with ASD. She is a founding member of the Autism Foundation and Research Group (HU) and the Parent's Association. Csilla works in „Vadaskert” Child and Adolescence Hospital (Budapest) and is head of the Autism service department. With the cooperation of János Farkas we are developing a computer program for people with autism, it is called ASD quiz.

## Salva Vita – Katalin Vég



Katalin Vég manages the Salva Vita foundation that helps disabled people to find work and live a fulfilled life. Katalin started her carrier at the Hand in Hand Foundation as a project manager of the first ever group-home programme in Hungary. After the birth of her son, she started to work with the Salva Vita foundation. For ten years now, she manages this foundation that celebrates its 20th birthday this year.

They introduced pioneer services in Hungary back in the mid 90's: such as the Work Experience programme and the Supported Employment service for people with intellectual disabilities.

## Dr. Stephen Shore



Diagnosed with "Atypical Development and strong autistic tendencies" and "too sick" for outpatient treatment Dr. Shore was recommended for institutionalization. Nonverbal until four, and with much support from his parents, teachers, wife, and others, Stephen is now a professor at Adelphi University where his research focuses on matching best practice to the needs of people with autism. In addition to working with children and talking about life on the autism spectrum, Stephen presents and consults internationally on adult issues pertinent to education, relationships, employment, advocacy, and disclosure

## Dániel Szalkai



Daniel Szalkai is a designer. In his research, he examines the adaptation of the environment of Residential Homes and workplaces for persons with special needs. He has been working with ASD since 2008 and he works for Miskolc Autistic Foundation from 2012. He manages a new, design oriented employment program and also develops new specific design projects. He has professional relationship with the Autism Farm Community Network, Moholy-Nagy University of Art and Design, Autistic Art program, Hungarian Autistic Society, MOHA.

## Giacomo Vivanti



Dr. Vivanti is a Research Fellow at the Olga Tennison Autism Research Centre at the La Trobe University, Melbourne, Australia. His research is focused on the cognitive processes underlying action understanding, imitation, and social learning in Autism, and the impact of early intensive treatment on the outcomes of young children with Autism.

The Congress Organizing Committee is extremely grateful to him for holding a workshop on Day 0. for Hungarians who were not be able to participate at the Congress.

## Andrew Wright



Andrew Wright is an author, illustrator, teacher trainer and storyteller. As an author he has published: *Creating Stories With Children* (1997) and *Storytelling with Children* (2008), both with Oxford University Press. He has also published, *Writing Stories* (2008), with David A. Hill, with Helbling Languages. As a storyteller and a story maker with children, he has worked in over thirty countries.

Andrew and his wife Julia have two teenage daughters, one of whom, Alexandra, has autism. Alexandra has written and illustrated over 1000 books.

## University of Birmingham – Dr. Karen Guldberg



Dr. Karen Guldberg is currently Director of the Autism Centre for Education and Research (ACER) at the School of Education, University of Birmingham.

Her research interests are in the areas of Technology Enhanced Learning for children with autism; the training needs of practitioners in the field of autism and on notions of 'good autism practice'. She has a passionate interest in applying social learning theory to her work, with a particular focus on communities of practice. She is also inspired and guided by theories around inter-subjectivity.

## University of Birmingham – Dr. Glenys Jones

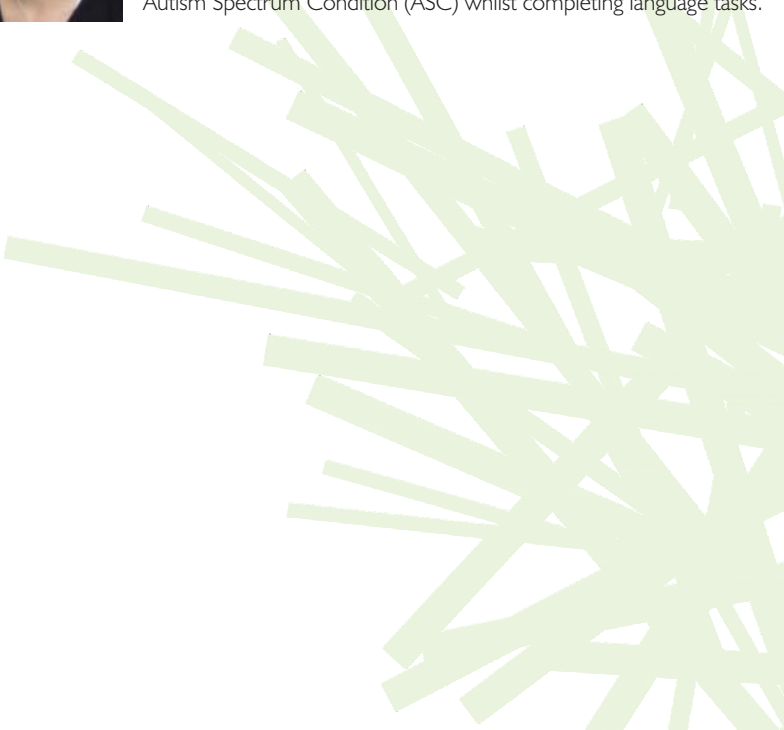


Dr. Glenys Jones is a Chartered Psychologist, lecturer and researcher in the Autism Centre for Education and Research (ACER) at the School of Education, University of Birmingham. She has worked in the field of autism for over 30 years and is particularly interested in educational interventions and evaluation. Her experience with parents and families as an Educational Psychologist and researcher has highlighted the central importance of the views of the child and the family, when designing and delivering effective interventions.

## University of Birmingham – Dr. Kerstin Wittmeyer



Kerstin has been appointed as a lecturer and researcher in the Autism Centre for Education and Research. She previously worked for several years in the Oxford Autism Research Group, where she managed the work programme of the International Molecular Genetics Study of Autism Consortium (IMGSAC). As a member of staff at the Oxford Neurodevelopmental Magnetoencephalography (MEG) Centre, Kerstin used MEG to measure the brain responses of individuals with an Autism Spectrum Condition (ASC) whilst completing language tasks.





# 1st day: September 26, 2013 PROGRAMME

Pátria room	11.00-11.20 <b>Opening ceremony</b>	12.30-14.00 <b>Lunch Break</b>	14.00-15.00 <b>Keynote Presentations</b> <b>FUENTES, Joaquin:</b> DSM 5: Advances, limitations and proposed complementary ways <b>BALÁZS, Anna:</b> A summary account about the last 25 years of the Autism Foundation and the autism-situation in Hungary <b>BÖLJE, Sven:</b> Autism and technology: The example of computer-aided facial emotion recognition and expression training <b>GYÖRI, Miklós:</b> Don't get lost in the social space - and don't get lost in the digital space!	17.00-17.30 <b>Coffee Break</b>	17.30-18.00 <b>Keynote Presentations</b> <b>FRIEDEL-MASIN, Evelyne:</b> The UN Convention: Instrument for the defense of the rights of persons with autism <b>CHARMAN, Tony:</b> Getting answers from babies about autism	Bartók room	18.00-18.30 <b>Symposia</b> Eye-tracking studies on autism	Lehár room	18.00-18.30 <b>Symposia</b> Employment	Larus	18.00-18.30 <b>Workshop</b> ICT - Workshop: 1. Overview and discussion of technologies for autism; 2. Technologies for education and habilitation; 3. Technologies for inclusion
			<b>Symposia</b> Technology in support and research Intervention efficiency and outcome			<b>Poster + oral presentations</b> Recognition, diagnosis, profiling Emotions, interpersonal relationships and communication Towards future technologies: broad approaches and social robotics Raising awareness, organising services, coping with accompanying		<b>Workshop</b> <b>HATTERSLEY, Caroline:</b> Ageing in the UK <b>SHORE, Stephen:</b> An Inside View Towards Success			



## 2nd day: September 27, 2013

	9.00-10.00	10.00-11.00	11.00-11.30	11.30-12.30	12.30-13.30	13.30-15.00	15.00-16.00	16.00-17.00
<b>Pátria room</b>		<b>Keynote Presentations</b> <b>JORDAN, Rita:</b> Autism & Education <b>BLACKBURN, Ros:</b> Logically Illogical <b>SALLY, Rogers:</b> New findings about early intervention outcomes	<b>Coffee Break</b>	<b>Keynote Presentations</b> <b>STEFANIK, Krisztina:</b> 'Be evidence-based!' An inspiring or puzzling idea for autism-professionals in the practice? <b>HAPPÉ, Francesca:</b> Trying to understand the many aspects of autism spectrum conditions <b>GERGELY, György:</b> Impaired Sensitivity to Ostensive Signals of Communicative Intention in Autism Spectrum Disorder	<b>Lunch Break</b>		<b>Keynote Presentations</b> <b>SHIH, Andy:</b> Recent progress in autism research <b>CHAWARSKA, Katarzyna:</b> Advances in research on early syndrome expression in ASD <b>PEETERS, Theo:</b> Autism and society <b>BOGNÁR, Virág Katalin:</b> Parental management of social denial	
<b>Bartók room</b>		<b>Symposia</b> Cognitive control Risks occurrence, co-occurrence		<b>Symposia</b> Social Cognition Understanding the unique world of autism			<b>Symposia</b> Families in focus Quality of life	
<b>Lehár room</b>		<b>Poster + oral presentations</b> Parenthood and families: roles and well-being Social cognition and communication, eye-tracking		<b>Poster + oral presentations</b> Adulthood, employment, ageing Info-communication technologies for autism: web-based and mobile tools			<b>Poster + oral presentations</b> Environments and autism: school and beyond Evidence on outcome and intervention efficacy	
<b>Larus</b>		<b>Workshop</b> <b>SALVA VITA - VÉG, Katalin:</b> Broadening and improving employment opportunities of people with intellectual disabilities and Autism Spectrum Disorder in Hungary <b>SZALKAI, Dániel:</b> Presentation of the Autism Farm Community Network		<b>Workshop</b> <b>PREKOP, Csilla - FARKAS, János:</b> Family support services - Alternative communication (ASD) QUIZ)	<b>Symposia</b> Profiling ASD persons		<b>Workshop</b> <b>MERZER, Sheila E:</b> LOOKING BELOW THE SURFACE To better understand and support students with Autism Spectrum Disorders <b>WRIGHT, Andrew:</b> How to help people to make stories	

### 3rd day: September 28, 2013

<b>Pátria room</b>	9.00-10.30	<b>Symposia</b> Developing emotions Raising awareness	10.30-11.00	<b>Coffee Break</b>			11.30-12.10	<b>Symposia</b> Enabling key actors	12.15-13.00	<b>Keynote Presentations</b> <b>PAGETTI VIVANTI, Donata:</b> The impact of the UNCRPD on service models for persons with ASD <b>MINSHEW, Nancy:</b> New Milestones in Autism Research and Clues to the Future of Treatment	13.00-13.45	13.45-14.00	14.00-14.30	14.30-15.00	
	<b>Bartók room</b>		<b>Symposia</b> Learning for a fuller life Recognition, diagnosis, treatment					<b>Symposia</b> Understanding of autism in key actors Developing communication					<b>State of Art Closing speech</b> <b>HOWLIN, Patricia:</b> Autism research-how far have we come and where do we go next?		
<b>Lehar room</b>		<b>Symposia</b> Ageing, evidence and intervention Nationwide programmes and strategies					<b>Symposia</b> Genes, body, brain								
<b>Larus</b>		<b>Workshop</b> University of Birmingham	<b>Burgos Art exhibition Announcement</b>				<b>Workshop</b> <b>ŐSZI, Tamásné:</b> A comprehensive approach to challenging behaviour								

# SOUL MOMENTS PERFORMANCE

- EMOTION, INTIMACY, LOVE -  
BY MÁRTA IMRIK AND THE ARTMAN ASSOCIATION  
ILDIKÓ BÓTA, ÁGNES GYULAVÁRI, FERENC KÁLMÁN

CLOSENESS - DISTANCE  
STILLNESS - DYNAMISM  
ATTRACTION - REPULSION

PERFORMED BY PEOPLE WITH AUTISM AND  
PROFESSIONALS OF ARTMAN ASSOCIATION



BUDAPEST CONGRESS CENTER  
26.09.2013 11.00

AT THE OPENING CEREMONY OF  
AUTISM EUROPE CONGRESS

MORE ABOUT ARTS AND MOVEMENT THERAPIES ORGANIZED BY ARTMAN ASSOCIATION

[WWW.TANCEANIA.HU](http://WWW.TANCEANIA.HU)

© PHOTO BY GYÖRGY JÓKÚTI

# PROGRAM

September 26, Thursday

**Patria room**

11:00 **Opening Ceremony**

12:30 Lunch Break

## Keynote Presentations

Chair: FRIEDEL-MASIN, Evelyne

14:00-14:45 **FUENTES, Joaquin:**  
DSM 5: Advances, limitations and proposed complementary ways

14:45-15:30 **BALÁZS, Anna:**  
A summary account about the last 25 years of the Autism  
Foundation and the autism-situation in Hungary

Chair: PEETERS, Theo

15:30-16:15 **BÖLTE, Sven:**  
Autism and technology: The example of computer - aided facial  
emotion recognition and expression training

16:15-17:00 **GYÓRI, Miklós:**  
Don't get lost in the social space – and don't get lost in the digital space!

17:00 Coffee Break

Chair: SZILVASY, Zsuzsanna

17:30-18:00 **FRIEDEL-MASIN, Evelyne:**  
The UN Convention: Instrument for the defense of the rights of  
persons with autism

18:00-18:30 **CHARMAN, Tony:**  
Getting answers from babies about autism

**Bartók room**

## Symposia - Technology in support and research

Chair: HORVÁT, Krisztina

14:00-14:20 **GLASER, Bronwyn:**  
Neurobehavioral Changes After Web-based Socio-Emotional  
Remediation in Autism, 22q11.2 deletion syndrome, and  
developmental delay

- 14:20-14:40 **BOLAK, Edward:**  
ICT platform for adults with ASD: toolkit for communication, education, and work
- 14:40-15:00 **STEINDAL, Kari:**  
Smartphone as cognitive support for university students with Asperger syndrome or ADHD
- 15:00-15:20 **PECA, Andrea:**  
Are children with autism more prone to test the intention of a social robot compared to a human?
- 15:20-15:40 **BOADA, Leticia:**  
Seeing the Doctor without Fear: Systematic Desensitization for Medical Visits in ASD

### Symposia - Intervention efficiency and outcome

Chair: KANIZSAI-NAGY, Ildikó

- 15:40-16:00 **GOLD, Christian:**  
Much ADO(s) about nothing – or real progress in therapy evaluation?
- 16:00-16:20 **STOKES, Mark A:**  
Understanding the determinants of best practice intervention and teaching in High Functioning Autism Spectrum Condition
- 16:20-16:40 **KUNCEWICZ-SOSNOWSKA, Karolina:**  
Eclectic models of comprehensive autism therapy in context of evidence-based treatment
- 16:40-17:00 **KARIN, Mössler:**  
Shared moments. Relationship as outcome predictor in music therapy with children with ASD.
- 17:00 Coffee Break

### Symposia - Eye-tracking studies on autism

Chair: GYÖRI, Miklós

- 17:30-17:50 **SCHAER, Marie:**  
Visual decoding of social scenes from 2 to 6 years old in children with ASD
- 17:50-18:10 **VÁRNAGY-TÓTH, Zsombor:**  
Using and learning to use an assistive device – an eye-tracking study on attention optimization

**Poster + oral presentation - Recognition, diagnosis, profiling**

Chair: NEERLAND, Harald

- 14:00-14:05 **13.1 ALONIM, Hanna A.:**  
Advances in the Identification of Early Signs of Autism in First Year of Life
- 14:05-14:10 **13.2 CINTRAO ALMEIDA, Carla:**  
Early Assessment of ASD: Correlation between M-CHAT-R and ASD Diagnosis
- 14:10-14:15 **13.3 HAGLUND, Nils:**  
The Observation Scale Autism: A new screening method to detect Autism spectrum conditions at age 30 months
- 14:15-14:20 **13.4 VERHAEGHE, Liedewij:**  
Autism Spectrum Disorders in Extremely Preterm Born Children
- 14:20-14:25 **13.5 TEUNISSE, Jan-Pieter:**  
Clinical Correlates of Personality in ASD
- 14:25-14:30 **13.6 SIZOO, Bram:**  
Temperament and character as endophenotype in adults with autism or ADHD
- 14:30-14:45 Q&A

**Poster + oral presentation - Emotions, interpersonal relationships and communication**

Chair: VIVANTI, Giacomo

- 14:45-14:50 **14.1 NORDAHL HANSEN, Anders:**  
Concurrent validity between parent report and direct assessment of language in young children with childhood autism
- 14:50-14:55 **14.2 REGEC, Vojtech:**  
The Influence of Expressive Language of Children with Autism Spectrum Disorder on Their Quality of Life
- 14:55-15:00 **14.3 HEILVEIL, Ira P:**  
Perspectives on Love
- 15:00-15:05 **14.4 LECCESE, Antonella:**  
Emotional development and adaptive abilities in adults with Autism Spectrum Disorder and Intellectual Disability: a correlation study
- 15:05-15:10 **14.5 BECERRA, Erika:**  
ASPERGER FRIEND

15:10-15:15 **14.6 ALSAFFAR, Aylin A:**  
Body mass index, dietary intake and feeding problems of children with autism spectrum disorder (ASD)

15:15-15:30 Q&A

### **Poster + oral presentation - Towards future technologies: broad approaches and social robotics**

Chair: HERRERA, Gerardo

15:30-15:35 **15.1 PENSOSI, Veronica:**  
Advantages and challenges of innovative technologies applied to autism

15:35-15:40 **15.2 GULDBERG, Karen:**  
Shaping the Future of Technology Use in the Classroom

15:40-15:45 **15.3 GRAZIA, Ragone:**  
R.E.R. Therapy - Relational and Expressive Rehabilitation

15:45-15:50 **15.4 JISA, Lavinia Florina:**  
Investigating the role of a social robot and its virtual representation in the context of imitative interaction with children with ASD

15:50-15:55 **15.5 POP, Cristina E:**  
Social robots in psychotherapy for children with autism spectrum disorders

15:55-16:00 **15.6 SIMUT, Ramona E.:**  
How do children with ASD perceive a social robot and which are the effects on their social behaviors during a standardized interactive scenario?

16:00-16:15 Q&A

### **Poster + oral presentation - Raising awareness, organising services, coping with accompanying**

Chair: SAJÓ, Eszter

16:15-16:20 **16.1 PASCO, Greg:**  
A professional training and development model to improve opportunities for social inclusion for children and young people with autism

16:20-16:25 **16.2 POMONI, Maria:**  
Children with ASD and eating behaviour

16:25-16:30 **16.3 PENSOSI Veronica:**  
Attitude and risk of substance use in adolescents diagnosed with Asperger Syndrome

16:30-16:35 **16.4 SERGIYENKO, Inna:**  
Schizophrenia – a diagnosis that very often have adult autists



- 16:35-16:40 **I6.5 PENSOSI, Veronica:**  
Academy of Specialist: a short movie animated film clip to make society more aware of autism
- 16:40-16:55 Q&A
- 17:00 Coffee Break

## Symposia - Employment

Chair: VÉG, Katalin

- 17:30-17:50 **DALFERTH, Matthias:**  
Skilled jobs for people with ASD; vocational training and inclusion of adolescents in external training centres, and the importance of job coaching
- 17:50-18:10 **KANIZSAI-NAGY, Ildikó:**  
Employment of adults with autism spectrum disorder - Experiences of a newly developed complex autism-specific supported employment method
- 18:10-18:30 **PERKINS, David:**  
Outcome-focused autism employment programmes: can successful models be replicated transnationally?"

Larus

## Workshop

Chair: VÁRNAL, Zsuzsanna

- 14:00-15:30 **POVEY, Carol - HATTERSLEY, Caroline:**  
Ageing in the UK
- 15:30-17:00 **SHORE, Stephen:**  
An Inside View Towards Success
- 17:00 Coffee Break

## Workshop

Chair: SCHMIT, Claude

- 17:30-19:00 **ICT - Workshop:**
1. Overview and discussion of technologies for autism;
  2. Technologies for education and habilitation;
  3. Technologies for inclusion

## September 27, Friday

Patria room

### Keynote Presentations

Chair: HAPPÉ, Francesca

09:00-09:40 **JORDAN, Rita:**  
Autism & Education

09:40-10:20 **BLACKBURN, Ros:**  
Logically Illogical

10:20-11:00 **SALLY, Rogers:**  
New findings about early intervention outcomes

11:00 Coffee Break

Chair: FUENTES, Joaquín

11:30-12:10 **STEFANIK, Krisztina:**  
'Be evidence-based!' An inspiring or puzzling idea for  
autism-professionals in the practice?

12:10-12:50 **HAPPÉ, Francesca:**  
Trying to understand the many aspects of autism spectrum conditions

12:50-13:30 **GERGELY, György:**  
Impaired Sensitivity to Ostensive Signals of Communicative  
Intention in Autism Spectrum Disorder

13:30 Lunch Break

Chair: STEFANIK, Krisztina

15:00-15:30 **SHIH, Andy:**  
Recent progress in autism research

15:30-16:00 **CHAWARSKA, Katarzyna:**  
Advances in research on early syndrome expression in ASD

16:00-16:30 **PEETERS, Theo:**  
Autism and society

16:30-17:00 **BOGNÁR, Virág Katalin:**  
Parental management of social denial

## Symposia - Cognitive control

Chair: BÖLTE, Sven

- 09:00-09:20 **GYÓRI, Miklós:**  
On the Stability of Executive Functions in High Functioning Autism
- 09:20-09:40 **MCMANMON, Michael:**  
Visual Social Thinking: Strategies for Note Taking, Long Term Memory & Executive Functioning
- 09:40-10:00 **ALTGASSEN, Mareike:**  
The impact of inhibitory load on remembering delayed intentions in autism

## Symposia - Risks, occurrence, co - occurrence

Chair: FAVRE, Michel

- 10:00-10:20 **WILLIAMS, Katrina J:**  
Prevalence of autism spectrum disorders by the age of eight in one region, 2007-2011
- 10:20-10:40 **PHILLIPS, Cristy:**  
Predictors for an autism spectrum disorder diagnosis: Results of a risk modeling endeavor
- 10:40-11:00 **PLASSCHAERT, Ellen:**  
Is there a link between Neurofibromatosis Type I and Autism Spectrum Disorder?
- 11:00 Coffee Break

## Symposia - Social Cognition

Chair: VÁRNAI, Zsuzsanna

- 11:30-11:50 **RONCONI, Luca:**  
Weak Suppression Surrounding the Focus of Attention in Autism: a Possible Explanation of Visual Objects Overload?
- 11:50-12:10 **DRAIJER, Monique M.M.:**  
Relating autism to cognitive styles of engineering students
- 12:10-12:30 **GROCHOWSKA, Joanna:**  
Innovative procedures for early diagnosis of children with ASD (7-24 months old) and monitoring of ASD groups of risk

## Symposia - Understanding the unique world of autism

Chair: HAVASI, Ágnes

- 12:30-12:50 **ROTH, Ilona Ann:**  
The role of special interests in the lives of adults on the autism spectrum
- 12:50-13:10 **DEGRIECK, Steven:**  
The importance of routines
- 13:10-13:30 **HAJNALKA, Tarr:**  
“The artist wanted to express by this...” ...but what if he did not?  
An attempt to understand the graphic world of autism and contemporary art within one
- 13:30 Lunch Break

## Symposia - Families in focus

Chair: NEERLAND, Harald

- 15:00-15:20 **CORDES, Ragna:**  
Empowering parents of young children with autism. A high intensive home based early intervention program
- 15:20-15:40 **PRENDEVILLE, Paula:**  
“The potential role of grandparents in supporting families of children with Autism Spectrum Disorders: a family systems approach”
- 15:40-16:00 **GARLAND, Deborah:**  
An overview of a post diagnostic service for families affected by autism

## Symposia - Quality of life

Chair: GULDBERG, Karen

- 16:00-16:20 **VERMEULEN, Peter:**  
Happiness in autism: mission (im)possible?
- 16:20-16:40 **SMITH, Sue Jane:**  
Quality of life perceptions of adults with mild and borderline learning disability before and after the autism diagnostic process.
- 16:40-17:00 **CASTRO, Herculano:**  
Developing an objective tool to measure quality of life outcomes of people with Autism Spectrum Disorders (ASD)

## Poster + oral presentation - Parenthood and families: roles and well-being

Chair: ÓSZI, Patrícia

- 09:00-09:05 **17.1 PREECE, David R:**  
A matter of perspective – whole families' experiences of living with autism
- 09:05-09:10 **17.2 AERTS, Cisca:**  
Family hometreatment autism (FHA) in the Netherlands
- 09:10-09:15 **17.3 TEKOLA, Bethlehem:**  
Services for children with autism and their families in the horn of Africa: perspectives from a review of the literature & from service providers
- 09:15-09:20 **17.4 SCHAERLAECKEN, Stinne:**  
The importance of peer support within a family association
- 09:20-09:30 Q&A
- 09:30-09:35 **17.5 TAIT, Charlene A:**  
The Virtual Autism Advisor: An Online Approach to Empowering Parents
- 09:35-09:40 **17.6 STRAUSS, Kristin:**  
Parental Beliefs regarding their Inclusion in Treatment Provision moderate the Association between Child Characteristics and Parental Stress
- 09:40-09:45 **17.7 ROMHUS, Sidsel:**  
Daily living skills in children with autism
- 09:45-09:50 **17.8 MILLS, Richard:**  
Does introducing a pet dog to families of children with ASD improve quality of life?
- 09:50-10:00 Q&A

## Poster + oral presentation - Social cognition and communication, eye-tracking

Chair: SALLAI, Dorottya

- 10:00-10:05 **18.1 MAHALALEL, Noa:**  
Does Cognitive level affect the way people with ASD perceive emotions?
- 10:05-10:10 **18.2 SPEK, Annelies:**  
Toward an ecologically valid measure of cognitive features in autism: The usefulness of the Thematic Apperception Test.

- 10:10-10:15 **18.3 MAVROPOULOU, Sophia:**  
Maternal narrative input and theory of mind in school-age typical children and those on the autism spectrum
- 10:15-10:20 **18.4 BORSOS, Zsófia:**  
On the stability of performance in complex-explicit theory of mind tasks and the relationship to clinical symptoms in high functioning autism
- 10:20-10:30 Q&A
- 10:30-10:35 **18.5 DEWAELE, Nele:**  
Social attention in siblings of children with ASD: an eye tracking study
- 10:35-10:40 **18.6 MIURA, Yui:**  
ASD children's identification of face and referent from speaker's affective voice
- 10:40-10:45 **18.7 VIVANTI, Giacomo:**  
Emotional reactivity is associated with gains in language ability in young children with autism spectrum disorder
- 10:45-10:50 **18.8 AMESTOY, Anouck:**  
A spatial statistic based method for the analysis of face scanning in typical and autistic subjects with eye tracking technology
- 10:50-11:00 Q&A
- 11:00 Coffee Break

## Poster + oral presentation - Adulthood, employment, ageing

Chair: FARKAS, Edit

- 11:30-11:35 **19.1 FAGGI, Francesca:**  
Presentation of a Protocol for the selection of a behavioral training for patients with autism in a residential community
- 11:35-11:40 **19.2 SMITH, Sue Jane:**  
Developing an effective, economic and sustainable care pathway for adult autism diagnosis
- 11:40-11:45 **19.3 ULANDER, Ritva:**  
2000+ employer insights to hiring a person with autism spectrum disorder – the case of Finland 2011-2012
- 11:45-11:50 **19.4 MATYNIA, Katarzyna:**  
Paving the way to employment of people with an ASD
- 11:50-12:00 Q&A
- 12:00-12:05 **19.5 DE CARIS, Marco:**  
Job coaching and employment for 26 young adult with ASD

- 12:05-12:10 **19.6 SCHMIDT-NIELSEN, Lise:**  
The right match – for people on the autism spectrum
- 12:10-12:15 **19.7 GIERSZ, Michal:**  
Social enterprise for low-functioning adults with ASD
- 12:15-12:20 **19.8 SPEK, Annelies:**  
Defining the intellectual profile of elderly persons with an autism spectrum disorder
- 12:20-12:30 Q&A

## Poster + oral presentation - Info-communication technologies for autism: web-based and mobile tools

Chair: CHARMAN, Tony

- 12:30-12:35 **20.1 ARDUINO, Giuseppe Maurizio:**  
Do autistic people prefer touch technologies? A pilot study involving 70 people with ASD
- 12:35-12:40 **20.2 ARDUINO, Giuseppe Maurizio:**  
The touch for autism project (t4A)
- 12:40-12:45 **20.3 BOSCHETTO, Michele:**  
From paper tools to Ipad-2: a pilot study about visual and touch-screen supports for low-functioning adults with ASD
- 12:45-12:55 Q&A
- 12:55-13:00 **20.4 PENSOSI, Veronica:**  
Project Azahar: a set of leisure, communication and planning tools aimed at improving the quality of life of people with autism
- 13:00-13:05 **20.5 PENSOSI, Veronica:**  
Technology to assist autism: e-Mintza project
- 13:05-13:10 **20.6 TARPAN, Adelaide Katerine:**  
The use of technology in training professionals working with people living with Autism Spectrum Disorder (ASD)
- 13:10-13:15 **20.7 AERTS, Francisca:**  
Autism care 24/7, self management 24/7: eHealth and e-coaching for people/families with ASD
- 13:15-13:25 Q&A
- 13:30 Lunch Break



## Poster + oral presentation - Environments and autism: school and beyond

Chair: ÓSZI, Patrícia

- 15:00-15:05 **21.1 AARUP, Laars:**  
Inclusion in education
- 15:05-15:10 **21.2 MUNKHAUGEN, Ellen Kathrine:**  
School refusal in children and adolescents with autism spectrum disorder in regular Norwegian schools, an exploratory study
- 15:10-15:15 **21.3 PHILLIPS, Cristy:**  
Stress in mainstream-learners with autism spectrum disorder: Considerations for educational practice
- 15:15-15:20 **21.4 SEDRAN, Emanuela:**  
I urgently need your help but I am not able to ask for it. A protocol of intervention for people with Autism Spectrum Disorders in Emergency Rooms
- 15:20-15:25 **21.5 GAUDION, Katie Louise:**  
Green Spaces: Outdoor Environments for Adults with Autism
- 15:25-15:30 **21.6 POVEY, Carol:**  
ASD Swim Access Scheme
- 15:30-15:35 **21.7 BEAVER, Christopher:**  
Designing environments for children and adults with autism
- 15:35-16:00 Q&A

## Poster + oral presentation - Evidence on outcome and intervention efficacy

Chair: SCHMIT, Claude

- 16:00-16:05 **22.1 FAGGI, Francesca:**  
Early and intensive intervention in natural settings: Early Start Denver Model in kindergarten. How to make competent teachers for effective treatment
- 16:05-16:10 **22.2 FAVA, Leonardo:**  
Concordance between Parent and Therapists Teaching Behaviors and Interaction styles influences child play and joint engagement in Toddlers with ASD.
- 16:10-16:15 **22.3 FUJINO, Hiroshi:**  
Effects of dyadic peer-relationship-oriented intervention for high-functioning children with autism spectrum disorder: A pilot outcome study

- 16:15-16:20 **22.4 TO, Wilson KL:**  
Caring for Autistic Children: Can a Third Sector Support Group Help?
- 16:20-16:30 Q&A
- 16:30-16:35 **22.5 JENNY, Bettina:**  
KOMPASS - Social Skills Group-Training for Adolescents with Autism-Spectrum-Disorder: Practical Procedures and Results of the on-going Evaluation
- 16:35-16:40 **22.6 KURODA, Miho:**  
A Randomized Controlled Trial of a Cognitive-Behavioral Intervention for Emotion Regulation in Adults with High-functioning Autism Spectrum Disorders
- 16:40-16:45 **22.7 MAGNEE, Maurice JCM:**  
The efficacy of Person-Centered Planning for young adults with ASD in transition.
- 16:45-16:50 **22.8 ÓSZI, Tamásné:**  
Retrospective study of outcome in adulthood of students with high functioning autism versus students with autism and learning disability
- 16:50-17:00 Q&A

Larus

## Workshop

Chair: KÓVÁRI, Edit

09:00-10:00 **Salva Vita - VÉG, Katalin:**  
Broadening and improving employment opportunities of people with intellectual disabilities and autism spectrum disorder in Hungary

10:00-11:00 **SZALKAI, Dániel:**  
Detailed presentation of the Autism Farm Community Network

11:00 Coffee Break

## Workshop

Chair: SZILVASY, Zsuzsanna

11:30-12:30 **PREKOP, Csilla - FARKAS, János:**  
Family support services including alternative communication with ASD QUIZ

## Symposia - Profiling ASD persons

Chair: VIVANTI, Giacomo

- 12:30-12:50 **STOKES, Mark A:**  
The Adaptive Behavior Profile of girls with Autism spectrum disorder.
- 12:50-13:10 **HEAD, Alexandra M:**  
The Female Profile of Autism
- 13:10-13:30 **SONNEBORN, Christina KME:**  
Co morbid substance use disorder and autism spectrum disorder - characteristics of a consecutive sample of 38 patients from a Dual Diagnosis Program
- 13:30 Lunch Break

## Workshop

Chair: WRONISZEWSKA, Maria

- 15:00-16:00 **MERZER, Sheila E:**  
LOOKING BELOW THE SURFACE To better understand and support students with Autism Spectrum Disorders
- 16:00-17:00 **WRIGHT, Andrew:**  
How to help people to make stories



## September 28, Saturday

Patria room

### Symposia - Developing emotions

Chair: SIMÓ, Judit

- 09:00-09:20 **MCGILLIVRAY, Jane, A.:**  
A trial and evaluation of an assessment and intervention program to enhance the emotional health of adolescents/young adults with autism spectrum disorder
- 09:20-09:40 **SOMMERAUER, Michaela:**  
Development of emotional competence in people with ASS – Emotional Competence Training
- 09:40-10:00 **ROBINSON, Anna:**  
Process guiding person-centred /-experiential (PG-PCE) group therapy for people with Asperger's Syndrome (AS)

### Symposia - Raising awareness

Chair: SZILVASY, Zsuzsanna

- 10:00-10:20 **MIHAJLOVIC-MARKOVIC, Jelena N.:**  
Advocacy and self-advocacy of people with autism - human rights or best interest
- 10:20-10:40 **MICHALOWICZ, Tomasz:**  
Raising awareness now! - a complete recipe for a successful awareness campaign
- 10:40-11:00 **BATTEN, Amanda:**  
Models for effective empowerment of people with autism to campaign and raise awareness
- 11:00 Coffee Break

### Symposia - Enabling key actors

Chair: FARKAS, Edit

- 11:30-11:50 **MUGNAINI Daniele:**  
Wing's triad in the staff itself: how this model can help enhance the work climate in a center for low-functioning adults with ASD.
- 11:50-12:10 **HOLMBERG BERGMAN, Tiina:**  
The influence of Acceptance and Commitment Therapy (ACT) for the psychological well-being of mothers raising a child diagnosed with ASD

## Keynote Presentations

Chair: FRIEDEL-MASIN, Evelyne

12:15-13:00 **PAGETTI VIVANTI, Donata:**  
The impact of the UNCRPD on service models for persons with ASD

13:00-13:45 **MINSHEW, Nancy:**  
"New Milestones in Autism Research and Clues to the Future of Treatment"

13:45 **State of Art - Closing Speech**

Chair: SZILVASY, Zsuzsanna

13:45-14:30 **HOWLIN, Patricia:**  
Autism research – how far have we come and where do we go next?

14:30 **Closing Ceremony**

**Bartók room**

## Symposia - Learning for a fuller life

Chair: JORDAN, Rita

09:00-09:20 **VERMEULEN, Peter:**  
Autism spectrum disorders and intimate relationships: clarifying the challenge and the challenge of clarifying

09:20-09:40 **PULLINEN, Sirkku H.:**  
Static and Dynamic Assessment in Vocational Special Education for Students on the Autism Spectrum

09:40-10:00 **DRESICK, Ktarczyzna:**  
International mobility of adults with autism: a learning experience for life

## Symposia - Recognition, diagnosis, treatment

Chair: MINSHEW, Nancy

10:00-10:20 **CARLIER, Sophie:**  
The Autism Discriminative Tool (ADT): A level II screening questionnaire for teachers. Results of preliminary study.

10:20-10:40 **VIVANTI, Giacomo:**  
Feasibility and effectiveness of the Early Start Denver Model delivered in a community childcare service

10:40-11:00 **HONGZHI, Cao**  
Profiling of different types of de novo and rare inherited mutations in ASD revealed by whole genome sequencing

11:00

Coffee Break

## Symposia - Understanding of autism in key actors

Chair: KANIZSAI-NAGY, Ildikó

11:30-11:50

**MULCAHY, Sue:**

Exploration of autism understanding and role-specific training needs of police, lawyers and judges

11:50-12:10

**WITTEMEYER, Kerstin:**

A national integrated programme: The development of a professional competency framework for people working with pupils on the autism spectrum

12:10-12:30

**WEBSTER, Amanda A:**

The Effectiveness of a Graduate Program in Autism Studies in Improving Teacher Perception of Competence

12:30-12:50

**BARNABAS, Tamas E:**

„A new dimension" in education. The ways in which the concepts of potential patient and potential disability facilitate education of and training for me

12:50-13:10

**DANIELS, Amy M.:**

Light it Up Blue:Raising Global Autism Awareness

## Symposia - Developing communication

Chair: PEETERS, Theo

13:10-13:30

**HAVASI, Ágnes:**

How do we use augmentative and alternative communication tools and methods? A survey among Hungarian therapists

13:30-13:50

**GEERTS EV HAGEN, Petra:**

Individualised augmentative communication for individuals with autism, intellectual disability and visual impairment: Interpretation and implementation

13:50-14:10

**GERETSEGGER, Monika:**

Music therapy may promote relational skills in children with ASD – evidence from an updated Cochrane Review

## Symposia - Ageing, evidence and intervention

Chair: NEERLAND, Harald

- 09:00-09:20 **BARON, Michael:**  
Ageing
- 09:20-09:40 **KIMHI, Yael:**  
Cognitive and Adaptive Behavior Profile in ASD Preschoolers
- 09:40-10:00 **PALMIERI, Mark:**  
Application of Functional Analytic Models to Inform Intervention Planning Across the Lifespan and in Diverse Environments
- 10:00-10:20 **VERMEULEN, Peter:**  
Autism in midlife: crisis, challenge or blessing?

## Symposia - Nationwide programmes and strategies

Chair: SZÖLLŐSI - FÖLDESI, Erzsébet

- 10:20-10:40 **FARKAS, Edit:**  
Eight Points: Program for people with ASD
- 10:40-11:00 **VALKAMA, Katja A. K.:**  
Autism Friendly Housing – A nationwide joint experiment on creating the best possible living conditions for people with ASD
- 11:00 Coffee Break

## Symposia - Genes, body, brain

Chair: SHIH, Andy

- 11:30-11:50 **MACEDONI LUKŠIĆ, Marta:**  
Genetic abnormalities in children with autism spectrum disorders detected by array-comparative genome hybridization
- 11:50-12:10 **CASTREN, Maija L:**  
Defects in the differentiation of neural progenitors and behavioral phenotype of fragile X mouse
- 12:10-12:30 **KÄLLÉN, Karin:**  
Autism and Vitamin D
- 12:30-12:50 **GRANDGEORGE, Marine:**  
Autism spectrum disorders: Head circumference and body length at birth are both relative
- 12:50-13:10 **LEMONNIER, Eric:**  
A randomised controlled trial of bumetanide in the treatment of autism in children



**Workshop**

Chair: GYŐRI, Miklós

09:00-10:30 **University of Birmingham**

10:30 **Burgos International Art Exhibition -  
Announcement**

Chair: WRONISZEWSKA, Maria

11:00 Coffee Break

**Workshop**

Chair: HORVÁT, Krisztina

11:30-12:30 **ŐSZI, Tamásné:**  
A comprehensive approach to challenging behaviour

12:30 **European meeting of persons with Asperger  
Syndrome**

Chair: KRAUSZ, Katalin

**Poster display - Diagnostic questions and screening**

- I.1 LARSEN, Kenneth:**  
Diagnostic age, diagnostic practice and intervention for preschool children with autism spectrum disorders
- I.2 MATTILA, Marja-Leena:**  
Epidemiological and diagnostic viewpoints in autism spectrum disorders
- I.3 DUDOVA, Iva:**  
Screening for autism in preterm children with extremely low and very low birth weight: first results
- I.4 PISULA, Ewa:**  
Psychometric properties of the Polish version of the Autism Spectrum Quotient
- I.5 NÉMETH, Krisztina:**  
Tendencies and changes in the diagnosis of the autism spectrum disorders - Experiences of a child-and adolescent psychiatric outpatient clinic
- I.6 GRINDHEIM, Elisabeth:**  
Early language regression in children with infantile autism.
- I.7 TSUJII, Masatsugu:**  
Assessment of Autism Spectrum Disorders in Medical Checkups at 36 Months Predicts Adaptive Functioning in Nursery School at Two Years Later
- I.8 STENBERG, Nina:**  
Clinical signs at 18 months and functional outcomes in children with autism spectrum disorder.
- I.9 PIAT, Natalia:**  
Attention and inhibition functions in autism: methods of evaluation including virtual reality
- I.10 ROMHUS, Sidsel:**  
I. Thirty years: Any changes? Frequency of core autism and developmental characteristics in Nordland County, Norway
- I.11 GEVEN, Frédérique E.M.:**  
Case study of a 70 year old patient with an autism spectrum disorder who was wrongfully diagnosed with frontotemporal dementia.
- I.12 RONCONI, Luca:**  
Paternal Autistic Traits Are Predictive of Infants Visual Attention
- I.13 PTASZEK, Kacper:**  
Autism spectrum conditions (ASC) in females and males in Poland - similarities and differences in clinical picture

## Poster display - Assessment of autism and comorbidity

- 2.1 ROBIC, Suzanne:**  
Deciding in a changing world: a study in Asperger syndrome
- 2.2 MÄKINEN, Leena E:**  
Narrative referential cohesion in children with Asperger syndrome or high-functioning autism
- 2.3 KATAGIRI, Masatoshi:**  
Delayed disengagement of attention in individuals with autism spectrum disorders is caused by difficulty in cross-modal processing
- 2.4 BARRY, Myra:**  
Examining IQ among a Clinical Sample of Preschool Children with Autism Spectrum Disorder over time
- 2.5 LI, Dorothy W. Y.:**  
Apprehension of thematic relation versus taxonomic relation in individuals with Autism: Implication on the Weak Central Coherence account
- 2.6 CANTIO, Cathriona:**  
Cognitive alterations in ASD and comorbidity
- 2.7 BOGNÁR, Virág Katalin:**  
Sleep disturbances predict behavioural symptom severity in autism: As primary caregivers report
- 2.8 HAGENMULLER, Florence:**  
Vegetative empathy in Autism Spectrum Disorder – preliminary results
- 2.9 ZOCCANTE, Leonardo:**  
The association of rs4307059 and rs35678 markers with autism spectrum disorders is replicated in Italian families
- 2.10 FADDA, Roberta:**  
Putative role of geo-chemical environmental factors in the frequency of Autism Spectrum Disorders: an ecological study
- 2.11 BOSCAINI, Flavio:**  
Electroclinical, neuroradiological and neuropsychological study in 68 subjects affected by Pervasive Developmental Disorder (PDD)
- 2.12 HOEKSTRA, Rosa A:**  
The heterogeneity of autism: insights from twin and family studies
- 2.13 IIDA, Yukako:**  
Associations between autistic traits and clumsiness in Japanese schoolchildren

## Poster display - Autism, psychiatric disorders and theories

### 3.1 **CAAMANO, Marta:**

Psychopathology in children and adolescents with ASD without mental retardation

### 3.2 **MARTÍN JIMÉNEZ, Jose María:**

What else could we do with children with Asperger Syndrome in a group treatment? Dealing with anxiety

### 3.3 **BOADA, Leticia:**

Is there an overlap in the domain of Theory of Mind between ASD and Schizophrenia: Exploring Qualitative Differences

### 3.4 **MAGNANO SAN LIO, Francesca:**

Autism spectrum disorders in adults affected by schizophrenia and obsessive compulsive disorders

### 3.5 **ZAMORA HERRANZ, Marcos:**

Neuropsychological profile in preschoolers with ASD using NEPSY II

### 3.6 **GEBA, Ewa M.:**

Assessment and Treatment of Adolescents with HFA and Anxiety - A case study of "Adam"

### 3.7 **DAHLGREN SANDBERG, Annika:**

A critical view on Theory of Mind deficits in relation to autism spectrum conditions and communicative disorders

### 3.8 **KOSTAKI - SAKOULOGEORGA, Despina:**

Teaching theory of mind to individuals with autism and typical development: A systematic research synthesis

### 3.9 **SCHALLER, Ulrich M.:**

Animated Theory of Mind (AToM): Differences between Explicit and Implicit Theory-of-Mind Performance in High-Functioning Autism Spectrum Disorders

### 3.10 **VENUTI, Paola:**

A cultural comparison between Japan and Italy on how distress is expressed in children with autism spectrum disorders

## Poster display - Visual processing

### 4.1 **FRANCHINI, Martina:**

Visual preference for geometric motion in young children with ASD

### 4.2 **FADDA, Roberta:**

Perception of social cues and joint attention abilities in children with autism: an eye tracking study

### 4.3 **WALIGÓRSKA, Anna:**

Specific or delayed? Drawing development in ASD

**4.4 RODRÍGUEZ-FÓRTIZ, María-José:**

Enhancing the perceptive and cognitive visual processes in low-functioning autism: SIGUEME (FOLLOW-ME).

**4.5 D'AGOSTINO, Cynthia I.:**

On perspective and detail beauty: Weak central coherence trough photography. A workshop experience with children and adolescents with autism

**4.6 VOGINDROUKAS, Ioannis:**

Reading the mind in the eyes test”(child) a comparison study between children with typical development and children with high functioning autism

**Poster display - Adult lives**

**5.1 BAKER, Robert J.:**

Adult Community Autism Program: An Innovative Approach to Service and Systems Development for Supports throughout the Lifespan

**5.2 MACLEOD, Andrea G:**

Reflections On a Participatory Methodology To Consult With Adults on the Autism Spectrum

**5.3 LASSI, Stefano:**

Improving quality of life by psychotropic medication withdrawal in adults with ASD at the Fondation Autisme Luxembourg

**5.4 MONEGLIA, Martina:**

“Use of antipsychotics in a Reference Psychiatric Center dedicated to adolescents and adults with ASD and behaviour disorders”

**5.5 FAIGEL, Gyula:**

How to find proper occupation and hobby for persons with autism

**5.6 GRANCHI, Leonardo:**

Open doors in the future to employment for people with asd: a pilot project that becomes reality

**5.7 MCCAFFREY, Fiona:**

Is an Illness you can fix? Perceptions of diagnosis in adults with autism

**5.8 PIASECKI, Peter:**

Diagnostics and training for autistic students

**5.9 KANENAMI, Shiaki:**

A study on barriers in work place against persons with autism spectrum disorder

**5.10 POVEY, Carol:**

Developing a training service in participation with autistic adults

## Poster display - Language and communication development

- 6.1 LOUKUSA, Soile:**  
Pragmatic inference abilities in children with autism spectrum disorders
- 6.2 MASTROGIUSEPPE, Marilina:**  
Gestural Communication in Autism during mother-child interaction: comparison with children with Down Syndrome and with Typical Development
- 6.3 FERNANDES, Fernanda Dreux M.:**  
Professional education, research and service provision to ASD children in Brazil – reporting a 26-year experience
- 6.4 STOSIC, Jasmina:**  
Instrumental communication functions in children with autism spectrum disorders
- 6.5 DENTENEER, Wilma:**  
Augmented Concept Learning, 4 case studies
- 6.6 VAN DE SANDE, Kim:**  
Augmented Concept Learning, 4 case studies
- 6.7 DEMENEGA, Despina:**  
Administration of the pragmatic skills tests DELV & TPS in Greek children with HFA and comparison of their performance with that of control group
- 6.8 DESTEFANIS, Luciano:**  
A proposal of a creative use of Author software in communication and language
- 6.9 VASHDI, Elad:**  
Childhood apraxia of speech and Autism – Interaction and Influences
- 6.10 VASHDI, Elad:**  
The influence of initial phoneme cue (ipc) technique according to the VML method on word formation with a child who has apraxia of speech and autism
- 6.11 DOVA, Elisabeth:**  
Touring art exhibition
- 6.12 VOGINDROUKAS, Ioannis:**  
Nonverbal communication in typically developing children and in children with autism: a comparative study

## Poster display - Education research in autism

- 7.1 THOMSON, Mary:**  
Teachers' Implementation of ASD Evidence Based Practices in General Education Classrooms
- 7.2 ÓSZI, Tamásné:**  
Evaluating experiences of schools in using autism-specific curriculum

- 7.3 KOSSYVAKI, Lila:**  
Adult Interactive Style Intervention: how can adults increase the spontaneous communication of autistic children?
- 7.4 WIDMAN, Cheryl J.:**  
Improving Outcomes for Individuals with Autism Spectrum Disorder Through Postsecondary Education
- 7.5 COOPER, Anna:**  
Assessing the needs of higher education students with autism
- 7.6 MOLTENI, Paola:**  
Autism and multidisciplinary teamwork through the SCERTS Model
- 7.7 TAKAYANAGI, Nobuya:**  
A relation between autism spectrum, school absenteeism and behavioral and emotional problems of elementary and middle school students
- 7.8 ANTUNES, Ana P.:**  
Lost in translation, and about the school?
- 7.9 GIRSBERGER, Thomas:**  
"That's the way you do it"
- 7.10 KARABEY, Burak:**  
Psychometric features of anonym version of child empathy quotient-eq research of differences empathy skills of children with autism, gifted, typically

### **Poster display - Challenges for intervention**

- 8.1 REICHOW, Brian:**  
Evidence-based practices in autism
- 8.2 FAGGI, Francesca:**  
Intensive training for social skills in natural contexts of life experiences of parent training and school supervision
- 8.3 ROSSINI, Emmanuelle:**  
Social cognition improving by young children following social abilities training
- 8.4 RÖTTGERS, Hanns R.:**  
The MIA early intensive behavioral intervention project for toddlers and school children with ASD
- 8.5 SPEK, Annelies:**  
Can Mindfulness-based therapy reduce executive impairment in adults with autism spectrum disorders (ASD)?
- 8.6 BENTENUTO, Arianna:**  
Mother-Child and Father-Child Emotional Availability in Families of Children with Autism Spectrum Disorder



- 8.7 VENUTI, Paola:**  
Play in mother-child and father-child interaction in children with Autism Spectrum Disorder
- 8.8 GRANDGEORGE, Marine:**  
Pet adoption triggers empathy in individuals with autism spectrum disorders
- 8.9 AZEVEDO GALVAO, Victor Matheus:**  
Gender Apperception Test (GAT): A new way to assess the acquisition and development of the gender identity's notion
- 8.10 KATO, Kohei:**  
Promoting social interaction among children with high-functioning autism spectrum disorder using a tabletop role playing game
- 8.11 MORIWAKI, Aiko:**  
Effects of dyadic peer-relationship-oriented intervention for high-functioning children with ASD: Interactional changes in dyadic playing situations
- 8.12 NÓUPUU, Liis:**  
Using video modeling to teach symbolic play to children with autism
- 8.13 VENUTI, Paola:**  
Talking and giving: an experimental study of the effect of social interactions on altruism in ASD

### **Poster display - Everyday functioning and treatment**

- 9.1 GALLUCCI, Maria:**  
Intensive home based early intervention with autistic children ABA vs Traditional as usual: public-private partnership project
- 9.2 FAVA, Leonardo:**  
Exploring the Behavioral Profiles of school-aged children with ASD: Relation between Executive Functioning and Pragmatic Language Skills?
- 9.3 GOOSEN, Ank C.A.:**  
Applying EMDR in high functioning adults with an autism spectrum disorder
- 9.4 ANDERSEN, Per Normann:**  
Emotional and neurocognitive functioning in children with high-functioning Autism and ADHD
- 9.5 VAN LIER-APPELS, Caroline W.:**  
Autism and experience of emotion
- 9.6 TIRADO MARAVER, Maria J:**  
Metacognitive monitoring of reading in Autism
- 9.7 HO, Fuk-chuen:**  
Enhancing the Generalization of the Recognition of and the Reaction to Emotions

- 9.8 AZEVEDO GALVAO, Victor Matheus:**  
Assessing the notion of gender identity in children with autism spectrum disorders
- 9.9 GIRSBERGER, Thomas:**  
An illustrated model of developmental disorders
- 9.10 POVEY, Carol:**  
Graduated exposure and auditory sensitivities in autism: a single-case design

### **Poster display - Involving parents and families**

- 10.1 DERGUY, Cyrielle:**  
Having a child with autism: what kind of needs and support expectations for parents?
- 10.2 BUSSON, Myriam:**  
Perception of Parents of Preschool and School-Aged Autistic Children: Parenting Skills, Children's Qualities, and Protective Factor Against Stress
- 10.3 SEDRAN, Emanuela:**  
What kind of help can Parent-Training Programs give to families?
- 10.4 SCOTT, Lorraine:**  
Head of Learning Support and Assessment
- 10.5 FERNANDES, Fernanda Dreux M.:**  
Families communicating with children with autism spectrum disorders
- 10.6 MOTTA, Maria Chiara:**  
Stress level in mothers' and fathers' of a Sample of Children with Autism Spectrum Disorders
- 10.7 OZTURK, Yagmur:**  
Parenting profile of mothers and fathers who have children with autism spectrum disorders
- 10.8 NEDJAT, Schide:**  
Aspergers' Syndrome over the lifespan: a longitudinal study in a German outpatient group
- 10.9 POVEY, Carol:**  
Early Intervention Parenting Programme

### **Poster display - Social inclusion: technological innovation and sport**

- 11.1 PENSOSI, Veronica:**  
Pictogram Room project: a set of games for Kinect to improve body schema
- 11.2 MARINO, Giovanni:**  
Allert

- 11.3 AURICCHIO, Anna:**  
AR-PECS PROJECT - Interactive PECS based on RFID technology: a pilot study to test a rehabilitation methodology in children with autism
- 11.4 DEVIAENE – VAN WEEHAEGHE, Natalie:**  
Building an Online Community for people with autism and their family
- 11.5 D'AGOSTINO, Cynthia I.:**  
Social Skills Training using Wii® Console for children with Asperger Syndrome/High Functioning Autism
- 11.6 BORS, Krisztián:**  
Autism and Aikido: The joy of movement - beyond therapy
- 11.7 CIRRINCIONE, Pietro:**  
Let's get a move on
- 11.8 HRGOVAN, Lana:**  
Partial integration model - setting the stage for inclusion

### **Poster display - Service development: improving life**

- 12.1 MARTÍN JIMÉNEZ, Jose María:**  
Group Intervention as part of the comprehensive approach in child population with Asperger Syndrome and high functioning autism.
- 12.2 VAN GENT, Brechtje:**  
Families Caring for a Child with Autism: Support Needs and Satisfaction with Services
- 12.3 NOGUEIRA, José Miguel:**  
"Quality of life" for families with children/youth with autism spectrum disorder
- 12.4 STEINDAL, Kari:**  
ASWI - Asperger Syndrome Workplace Interview
- 12.5 HARKINS, David:**  
The benefits of using an innovative bespoke quality framework within an organisation that supports people with Autism.
- 12.6 JENSEN, Britta, Bak:**  
"Ready - set - go" An education in retail
- 12.7 SCHREURS, Karen:**  
From Question Clarification to Offer of Care. A Need-Oriented Approach
- 12.8 ZAMORA HERRANZ, Marcos:**  
Developing Personal Autonomy Services: Supports Models applied for leisure and activities in the community

## Poster display - Service development: lifelong support

### 12.9 **GASCON, Hubert:**

Young people with a spectrum disorder of autism, families and services: results of a large survey conducted in Quebec

### 12.10 **OI, Manabu:**

Enhancement of public awareness and advocacy of autism: An experimental program in Japan

### 12.11 **JAKUBINYI, László:**

New solutions of social integration: Alternative Forest School (AFS)

### 12.12 **MACLEAN, Catherine:**

National Autism Strategies - Best Practice and a European Strategy for Autism

### 12.13 **SWEENEY, Karen J:**

Providing effective training on supporting and understanding individuals with autism

### 12.14 **ASHTON-SMITH, Jacqui:**

Girls on the autism spectrum: learning from and designing a curriculum to enable girls to lead fulfilled lives as women

### 12.15 **MAGNANO SAN LIO, Francesca:**

MIND THE GAP: A

### 12.16 **MERINO, María:**

GRief in individuals with autism spectrum disorders: a model of treatment

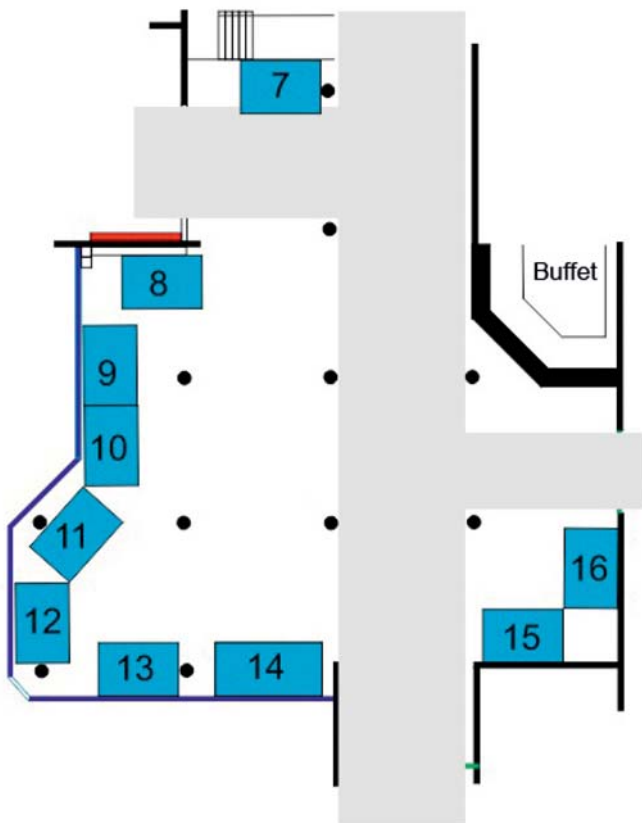
### 12.17 **ZAMORA HERRANZ, Marcos:**

Breaking walls: Groups Integrated in the Community.



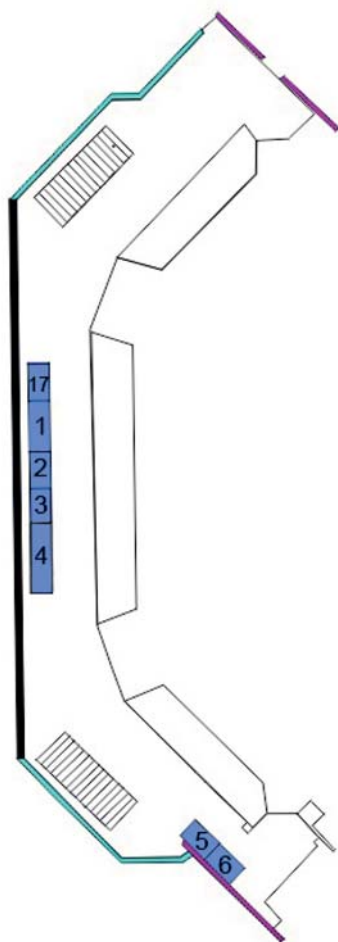
## Exhibitors

No.	Exhibitors / Mirror Corridor
1	Autismo Burgos
2	Hungarian Autistic Society / Autisták Országos Szövetsége
3	Autism Europe
4	Technologies for autism
5	The world's Leading Expert in Generic Testing /BGI-Health
6	JIM Foundation
17	Autism Foundation / Autizmus Alapítvány
	<b>Exhibitors / Aula</b>
7	The National Autistic Society, UK
8	Noldus Information Technology
9	APF Equipment
10	CIP College Internship Program
11	Avaz-Communication app for Autism/ Invention Labs Engineering Products Pvt.Ltd.
12	Fruit of care Nonprofit Ltd.
13	HORIZORA/ Zéta Design
14	Fundacion Orange
13	APF Equipment
15	Autism Farm Community Network / Majorháló
16	Equal Opportunities of Persons with Disability non-profit LTD./ FSZK Fogyatékos Személyek Esélyegyenlőségéért Közhasznú Nonprofit Kft.



## NOVOTEL CONGRESS 2013 AULA

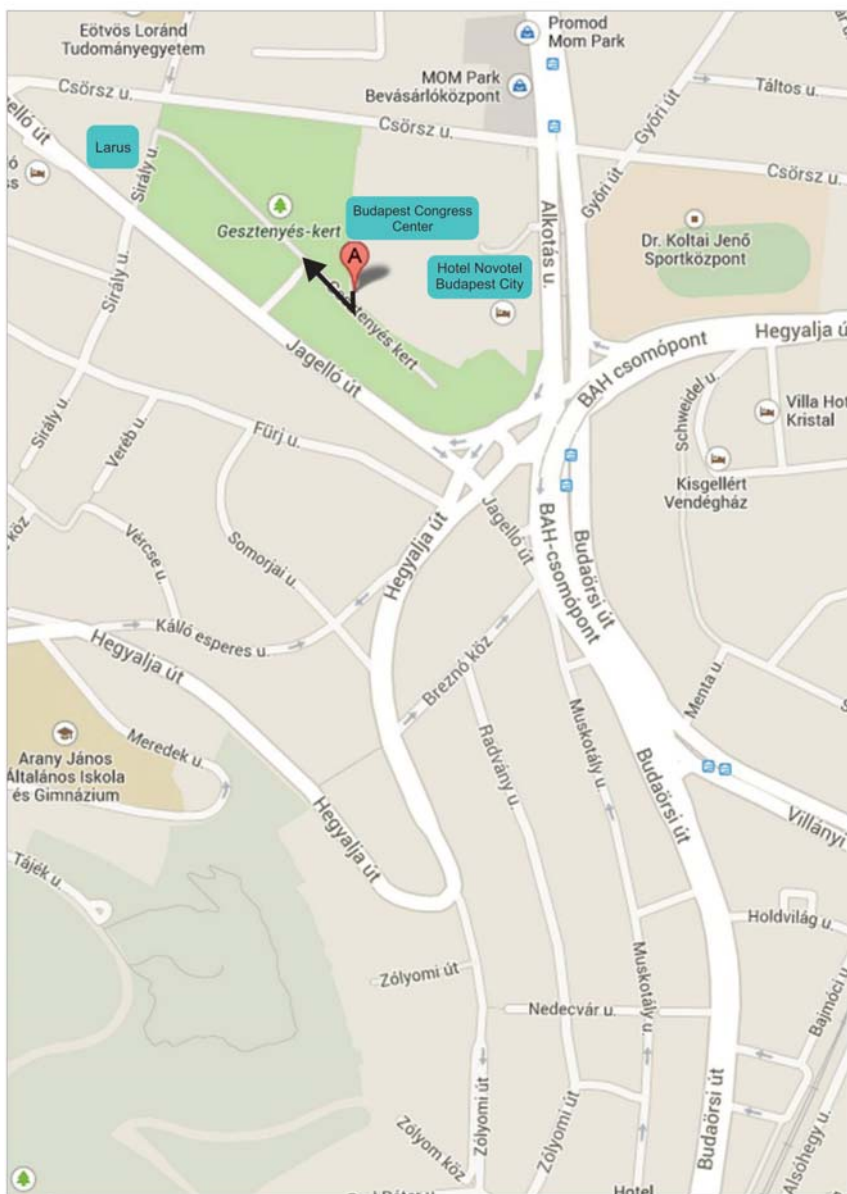
## Mirror Corridor – conference level





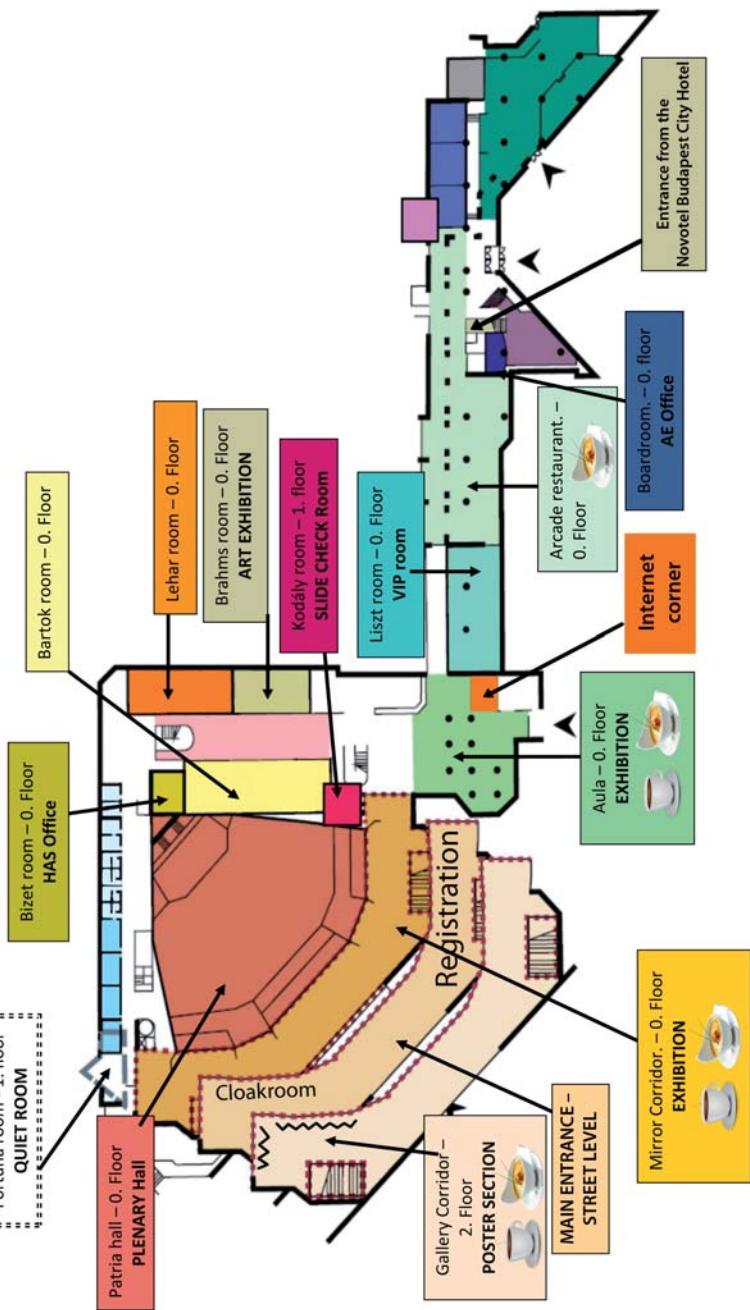
# Budapest Congress Center

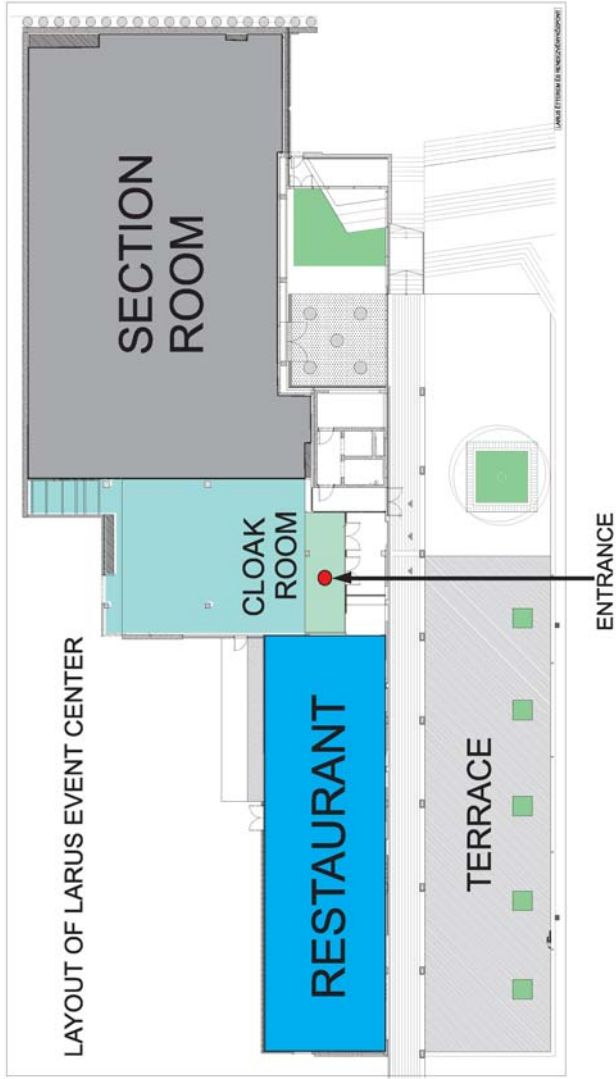
1123 Budapest, Jagelló út 1-3.



# LAYOUT OF BUDAPEST CONGRESS CENTER

- Fortuna room - 1. floor
- QUIET ROOM
- 
- 
- 



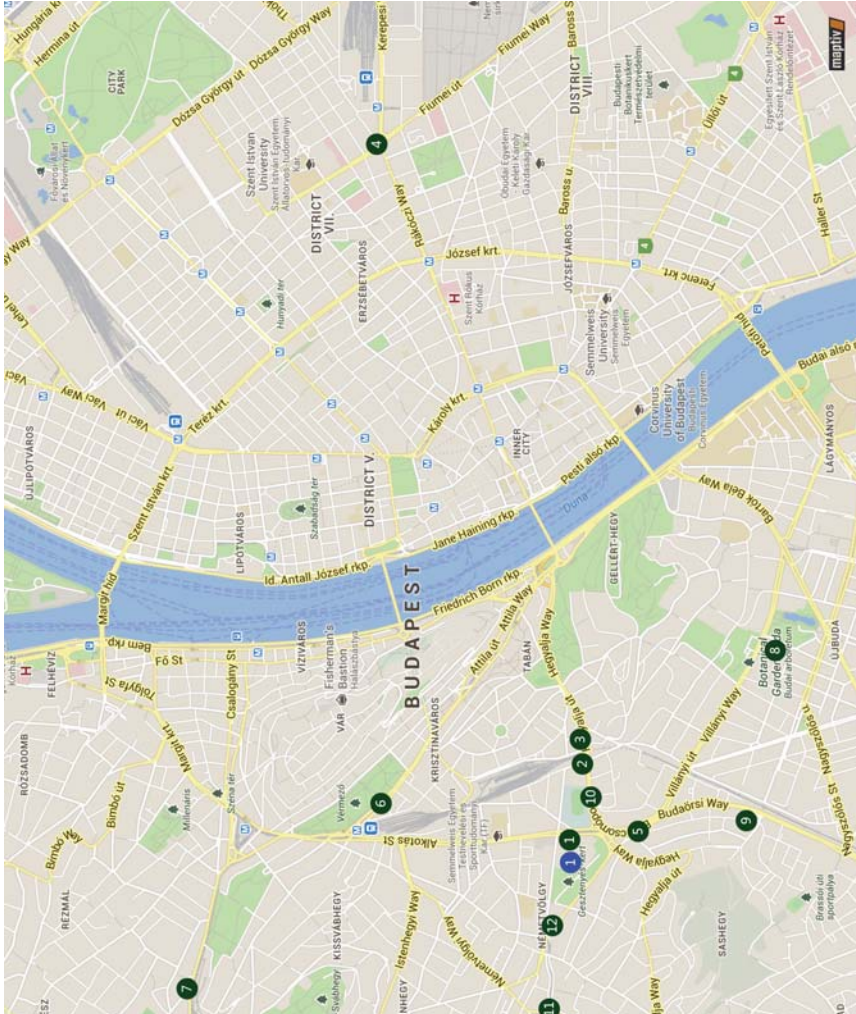


## Budapest - Hotels

- |   |                             |    |                         |
|---|-----------------------------|----|-------------------------|
| 1 | Novotel Budapest City Hotel | 7  | Danubius Hotel Budapest |
| 2 | Hotel Bara                  | 8  | Danubius Hotel Flamenco |
| 3 | Hotel Bara / Junior         | 9  | Hotel Classic           |
| 4 | Best Western Hotel Hungaria | 10 | Villa Hotel Kristal     |
| 5 | Hotel Mediterran            | 11 | Hotel Walzer            |
| 6 | Mercure Budapest Buda       | 12 | Jagello Business Hotel  |

## Venues

- 1 Budapest Congress Center



## Notes



## Notes





## Hungarian Autistic Society – Budapest

Autism Advocacy Association was founded in 1988, which is now known as the Hungarian Autistic Society. It has played a major role in the interest advocacy of people living with autism spectrum disorder and their families for 25 years. This national umbrella organisation, which is strategically very important, includes 1700 individual members and 80 member organizations. In Hungary, it represents the interests of nearly 100 000 families with autistic member in the following activities:

### ➤ **Supporting persons with autism and their families**

- conferences, parent meetings, other special events
- info centre – call centre
- parent trainings, publications, preparation of visual support material
- legal advice, professionals advice for families
- parent to parent mentoring network

### ➤ **Advocacy issues**

- membership representation
- lobbying
- consultations with ministries and other umbrella organisations
- professional forums, conferences
- recommendations for policy papers
- service development

### ➤ **Awareness raising**

- join the worldwide "Light It Up Blue" awareness campaign
- raising events each year
- "Poster for every doctor's surgery" campaign
- "Could I have an autistic classmate?" raise awareness at school
- media presence

### ➤ **Networking and international relations with stakeholders:**

- 80 member organisations
- service providers (schools, early intervention centres, diagnostic centres, residential homes, etc...)
- umbrella organisation network
- Autism Farm Community Network
- Autism-Europe
- European Disability Forum
- associated organisations dealing with disability

### ➤ **[www.aosz.hu](http://www.aosz.hu): the country's largest portal for autism**

**Address: Autisták Országos Szövetsége / Hungarian Autistic Society  
1053 Budapest, Fejér György utca 10.**

**Website: [www.aosz.hu](http://www.aosz.hu)**

**Telephone: +36 40 200 821**

**+36 1 354 1073**

**Fax: +36 1 302 0194**

**Email: [info@esoember.hu](mailto:info@esoember.hu)  
[elnok@esoember.hu](mailto:elnok@esoember.hu)**





2013

BUDAPEST

international  
congress  
autism  
europe  
10.

Reviewed by

Ildikó Kanizsai-Nagy  
Krisztina Németh  
Krisztina Stefanik